

VOR/DME GLL 114.2 Chan 89	APP CRS 248°	Rwy Idg TDZE Apt Elev N/A N/A 5020
---	------------------------	--

VOR-A
NORTHERN COLORADO RGNL (FNL)

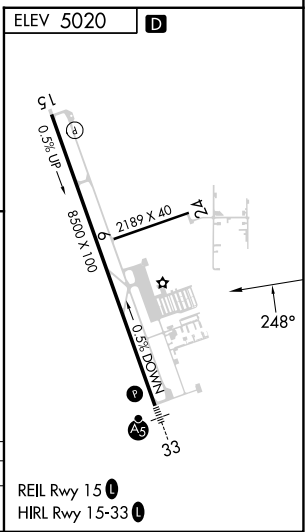
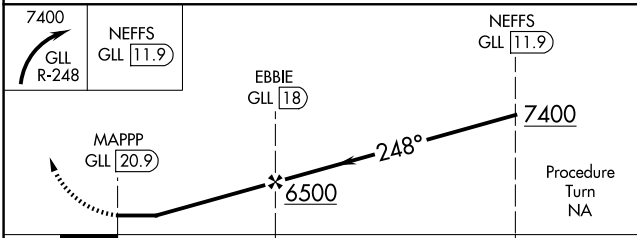
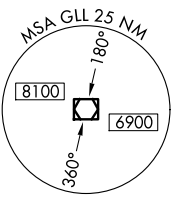
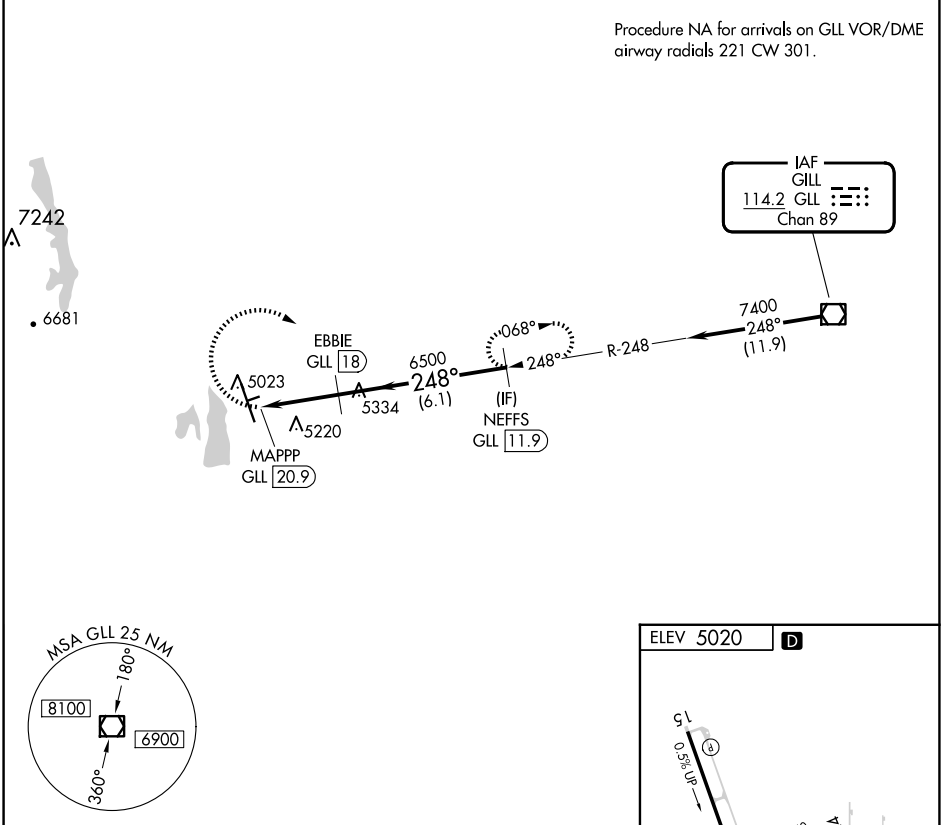
DME required.

⚠ Circling Rwy 24 NA at night. When local altimeter setting not received, use Denver Intl altimeter setting and increase all MDA 160 feet and Cat C/D visibility ½ SM.

MISSED APPROACH: Climbing right turn to 7400 via GLL VOR/DME R-248 to NEFFS/GLL 11.9 DME and hold.

ATIS 135.075	DENVER APP CON 134.85 251.125	NOCO TOWER★ 118.4 (CTAF) 0	GND CON 121.65	CLNC DEL 120.25 (When twr closed)
------------------------	---	---	--------------------------	--

Procedure NA for arrivals on GLL VOR/DME airway radials 221 CW 301.



CATEGORY	A	B	C	D
C CIRCLING	5500-1 480 (500-1)	5580-1 560 (600-1)	5580-1½ 560 (600-1½)	5760-2¼ 740 (800-2¼)

SW-1, 15 MAY 2025 to 12 JUN 2025

SW-1, 15 MAY 2025 to 12 JUN 2025