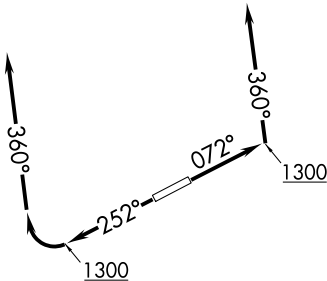
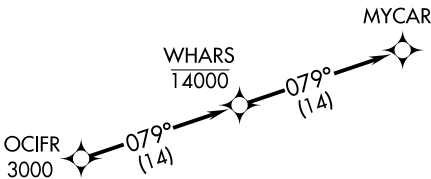


ASOS
118.925
CLNC DEL
125.7
CTAF
122.7
CLEVELAND DEP CON
125.35 346.325

TOP ALTITUDE:
ASSIGNED BY ATC

NOTE: RNAV 1.
NOTE: RADAR required.
NOTE: DME/DME/IRU or GPS required.



TAKEOFF MINIMUMS:
Rwys 7, 25: Standard
with minimum climb of
500' per NM to 1300.

NOTE: Chart not to scale.



DEPARTURE ROUTE DESCRIPTION

TAKEOFF RUNWAY 7: Climb on heading 072° to 1300, then on heading 360° or as assigned by ATC for RADAR vectors to cross OCIFR at or above 3000, thence....
TAKEOFF RUNWAY 25: Climb on heading 252° to 1300, then right turn on heading 360° or as assigned by ATC for RADAR vectors to cross OCIFR at or above 3000, thence....
....on track 079° to cross WHARS at or below 14000, then on track 079° to MYCAR.
Maintain altitude assigned by ATC, expect filed altitude ten minutes after departure.

EC-2, 15 MAY 2025 to 12 JUN 2025

EC-2, 15 MAY 2025 to 12 JUN 2025