

**SPIRIT OF ST LOUIS** (SUS)(KSUS) 17 W UTC-6(-5DT) N38°39.73' W90°39.12'  
463 B TPA—See Remarks LRA Class IV, ARFF Index A NOTAM FILE SUS MON Airport  
**RWY 08R-26L:** H7485X150 (CONC-GRVD) S-33, D-100, 2S-127

**ST LOUIS**  
H-50, L-27B, A  
IAP, AD

PCN 34 R/B/W/T HIRL CL  
**RWY 08R:** MALSR. VASI(V4R)—GA 3.0° TCH 55'. RVR-T Rgt ttc.  
**RWY 26L:** MALSR. VASI(V4L)—GA 3.0° TCH 55'. RVR-T Thld dsplcd 481'.

**RWY 08L-26R:** H5000X75 (ASPH-RFSC) 2D-45.5 PCN 5 F/D/X/T MIRL

**RWY 08L:** PAPI(P4L)—GA 3.0° TCH 41'.

**RWY 26R:** VASI(V4L)—GA 3.5° TCH 47'. Pole. Rgt ttc.

#### RUNWAY DECLARED DISTANCE INFORMATION

**RWY 08L:**TORA-5000 TODA-5000 ASDA-5000 LDA-5000

**RWY 08R:**TORA-7485 TODA-7485 ASDA-7414 LDA-7414

**RWY 26L:**TORA-7485 TODA-7485 ASDA-7485 LDA-7004

**RWY 26R:**TORA-5000 TODA-5000 ASDA-5000 LDA-5000

**SERVICE:** S4 FUEL 100LL, JET A OX 2, 4 LGT HIRL Rwy 08R-26L preset on med ints 0500-1200Z; MIRL Rwy 08L-26R preset on low ints 0500-1200Z to increase ints after 0500Z and ACTIVATE MALSR Rwy 08R and Rwy 26L—CTAF.

**NOISE:** Noise sensitive areas to the south of arpt. Noise Abatement

Procedures: For Dep stage III acft use 08L-26R 0500-1200Z. Noise Abatement Procedure in effect: For Dep stage II acft use Rwy 08L/26R 0400-1300Z expc PPR 636-532-2222 Mon-Fri 1400-2300Z, other times call 314-568-0581/0584, 636-536-2877, or 636-441-9231.

**AIRPORT REMARKS:** Attended continuously. Arpt clsd to acft over 100,000 lbs, except acft 100,000-150,000 lbs for PPR 24 hrs call arpt manager 636-532-1858. Rwy 08R-26L CLOSED to touch and go landing. 24hr PPR required for all Military Aircraft contact 636-532-2222. Numerous and intense helicopter ops on arpt. Be alert: Rwy 08L-26R and parallel and connecting twy CLOSED to Part 121 air carrier ops. Intersection C CLOSED indef between Twy E and Rwy 08L-26R. Taxilane B btn South Entrance and West Ramp and Twy Z CLSD. PPR 24 hrs for air carrier ops with more than 30 passenger seats, call arpt manager 314-568-0584. Air carrier ops over 9 passenger seats not authorized in excess of 15 min before or after scheduled arrival/departure times except prior coordination with arpt manager for ARFF 314-568-0584. Twy B between SE and NW entrance to West Ramp, Twy B NW Twy A from the distance of 200' to 700' and Twy Z not visible by twr. Bright driving range lights 2.7 NM east of Rwy 26L. All maintenance hi-power engine run-ups use ground run-up enclosure on Twy D. TPA—Rwy 08R-26L prop acft 1700 (1237); Rwy 08L-26R prop acft 1300 (837). TPA—jets 2000 (1537). Flight Notification Service (ADCUS) avbl Mon-Fri 2300-1430Z, Sat and Sun 24 hrs. Rwy 8L-26R not avbl for scheduled acr ops with more than 9 psgr seats or unscheduled acr at least 31 psgr seats.

**AIRPORT MANAGER:** 636-532-2222

**WEATHER DATA SOURCES:** ASOS 134.8 (314) 890-7255. LAWRS 1200-0500Z.

**COMMUNICATIONS:** CTAF 124.75 ATIS 134.8 636-532-3213 UNICOM 122.95

RCO 122.2

② SAINT LOUIS APP/DEP CON 126.5

**TOWER** 124.75 (1200-0500Z) **GND CON** 121.7 **CLNC DEL** 133.1 **CLNC DEL** 121.7 (when twr clsd)

**AIRSPACE:** CLASS D svc 1200-0500Z; other times CLASS E.

**RADIO AIDS TO NAVIGATION:** NOTAM FILE STL.

**FORISTELL (L) (L) VORTACW** 110.8 FTZ Chan 45 N38°41.66' W90°58.28' 092° 15.1 NM to fld. 819/5E. TACAN AZIMUTH unusable:

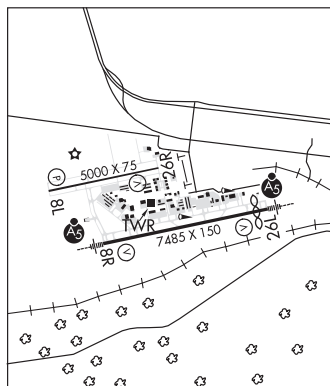
265°-285° byd 35 NM blo 2,500'

**EAVES NDB (LOMW)** 227 FZ N38°40.64' W90°32.84' 261° 5.0 NM to fld. 459/1W. NOTAM FILE SUS.

**SNOOP NDB (LOMW)** 326 SU N38°38.34' W90°46.02' 077° 5.6 NM to fld. 468/1W. NOTAM FILE SUS.

**ILS** 110.55 I-SUS Rwy 08R. Class IA. LOM SNOOP NDB. LOM unmonitored.

**ILS** 111.1 I-FZU Rwy 26L. Class IB. LOM EAVES NDB. LOM unmonitored. LOC unusable byd 30° right of course.



**ST LOUIS DOWNTOWN HELIPORT** (MO7) 0 N UTC-6(-5DT) N38°37.52' W90°10.98'

**ST LOUIS**

387 NOTAM FILE STL

**HELIPAD** H1: 37X37 (MATS)

**HELIPORT REMARKS:** Attended 1500-0100Z. Svc aft hrs avbl for fee; contact heliport mgr 618-514-0206. Daylight operations only, night operations not recommended. Call heliport mgr before arr for Indg availability due to hvy concentration of air taxi ops. 618-514-0206. Landing from the south and east are recommended. River barge platform measures approximately 175' by 54'.

**AIRPORT MANAGER:** 618-337-6060

**COMMUNICATIONS:** UNICOM 122.8

**CLEARANCE DELIVERY PHONE:** For CD stc St Louis Apch at 314-890-1017.