

**SHERMAN/DENISON**

**NORTH TEXAS RGNL/PERRIN FLD** (GYI)(KGYI) 4 W UTC-6(-5DT) N33°42.85' W96°40.44' DALLAS-FT WORTH

749 B NOTAM FILE GYI H-6H, L-17C, A IAP, AD

**RWY 18L-36R:** H9000X150 (ASPH-CONC) S-125, D-189, 2D-326  
PCN 54 R/B/W/T MIRL

**RWY 18L:** MALSR. VASI(V4L)—GA 3.0° TCH 48'.  
**RWY 36R:** MALSR. VASI(V4L)—GA 3.0° TCH 51'.

**RWY 18R-36L:** H4008X100 (ASPH-CONC)

**SERVICE:** S4 FUEL 100LL, JET A OX 3 LGT Dusk-Dawn. MIRL Rwy 18L-36R preset low instst, to incr instst and ACTVT MALSR Rwy 18L and MALSR Rwy 36R—CTAF.

**AIRPORT REMARKS:** Attended 1300-0100Z±. 100LL self serve. For fuel after hours call 903-786-2666; call-in fee. Rwy 18L dsngd calm wind rwy. Txy mkgs and hold lines faded. NOTE: See Special Notices—Aerobatic Practice Area.

**AIRPORT MANAGER:** 903-786-2904

**WEATHER DATA SOURCES:** AWOS-3 118.775 (903) 786-7790.

**COMMUNICATIONS:** CTAF 120.575 ATIS 118.775

SHERMAN/DENISON RCO 122.3 (FORT WORTH RADIO)

Ⓡ FORT WORTH CENTER APP/DEP CON 124.75

TOWER 120.575 (1300-0100Z±) GND CON 124.125

**CLEARANCE DELIVERY PHONE:** For CD if una to ctc on FSS freq, ctc Fort Worth ARTCC at 817-858-7584.

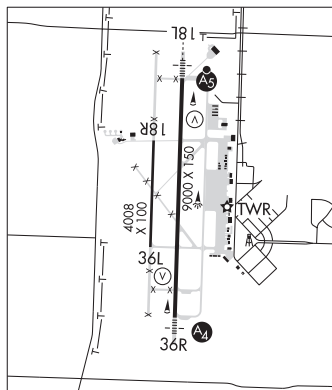
**AIRSPACE:** CLASS D svc 1300-0100Z±; other times CLASS G.

**RADIO AIDS TO NAVIGATION:** NOTAM FILE FTW.

BONHAM (VH) (H) VORTACW 114.6 BYP Chan 93 N33°32.25' W96°14.05' 290° 24.4 NM to fld. 700/6E.

DENISON NDB (MHW) 341 DNI N33°49.59' W96°40.13' 179° 6.7 NM to fld. 642/3E. NOTAM FILE GYI.

ILS 111.7 I-GYI Rwy 18L. Class IT. LOC unusable byd 25° right of course. Glideslope autocoupled approaches NA blw 1,900' MSL.



**SINTON** (T69) 2 W UTC-6(-5DT) N28°02.31' W97°32.55'

48 B NOTAM FILE SJT

**RWY 14-32:** H4323X55 (ASPH) S-8 MIRL

**RWY 14:** REIL. PAPI(P2L)—GA 3.0° TCH 19'. Thld dsplcd 250'. Road.

**RWY 32:** REIL. PAPI(P2L)—GA 3.0° TCH 21'. Thld dsplcd 400'. Road.

**RWY 03-21:** 3100X50 (TURF)

**RWY 03:** Road.

**RWY 21:** P-line.

**SERVICE:** S4 FUEL 100LL, JET A+ LGT ACTVT REIL Rwy 14 and Rwy 32; MIRL Rwy 14-32—CTAF.

**AIRPORT REMARKS:** Attended 1330-2300Z±. Rwy 03-21 CLOSED indefly. Rwy 03-21 surface: rwy not mntnd, not insp'd. Una to dtrm exact lctn of rwy. For fuel or svc call 361-364-3200. Aft hrs call 361-548-1483 or 361-364-2251.

**AIRPORT MANAGER:** 361-226-0112

**WEATHER DATA SOURCES:** AWOS-3 118.25 (361) 364-1844.

**COMMUNICATIONS:** CTAF/UNICOM 122.8

CORPUS CHRISTI RCO 122.2 (SAN ANGELO RADIO)

Ⓡ CORPUS APP/DEP CON 120.9

**CLEARANCE DELIVERY PHONE:** For CD ctc Corpus Christi Apch at 361-299-4230.

**RADIO AIDS TO NAVIGATION:** NOTAM FILE CRP.

CORPUS CHRISTI (VH) (H) VORTACW 115.5 CRP Chan 102 N27°54.23' W97°26.69' 318° 9.6 NM to fld. 60/9E.

TACAN AZIMUTH & DME unusable:

024°-036° byd 35 NM blo 1,700'

037°-023° byd 35 NM blo 2,000'

265°-275°

VOR unusable:

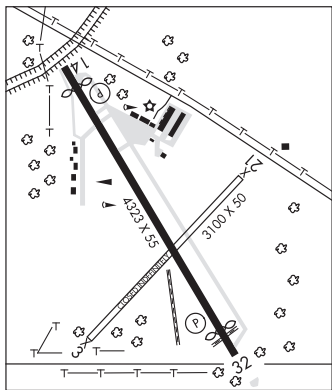
340°-005° byd 40 NM blo 7,000'

340°-005° byd 84 NM

Byd 30 NM blo 1,500'

TACAN AZIMUTH unusable:

080°-085° byd 30 NM



SAN ANTONIO

L-20H, 21A, GOAW

IAP

**SKYLARK FLD** (See KILLEEN on page 365)