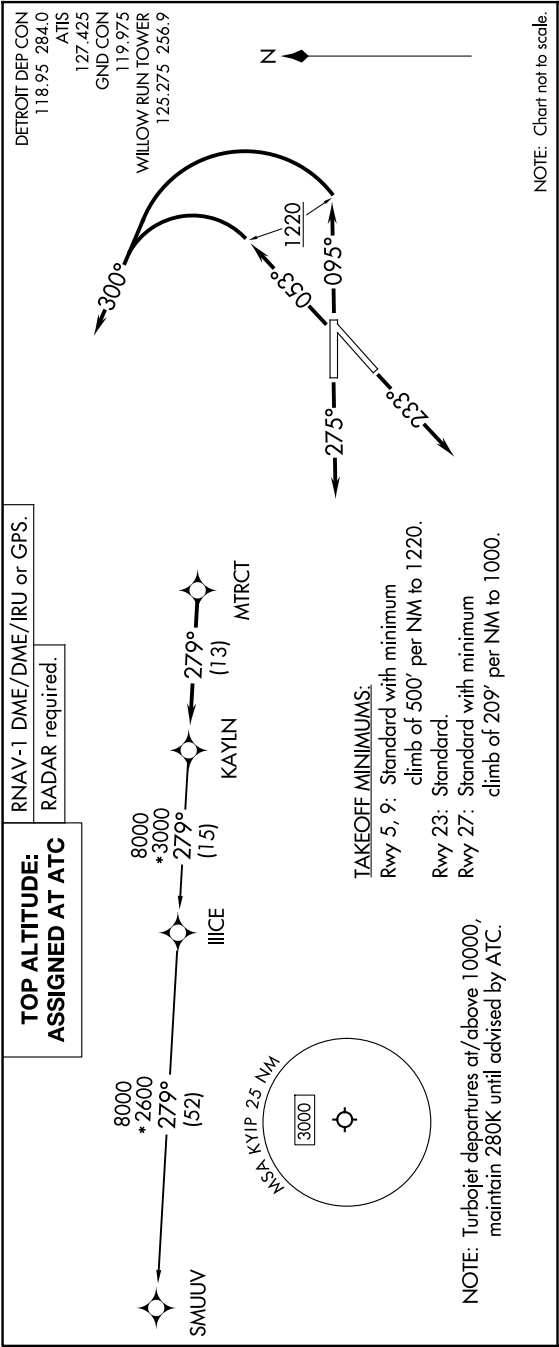


5202 JUN 01 12 JUN 2025 to 10 JUL 2025



DEPARTURE ROUTE DESCRIPTION

TAKEOFF RUNWAY 5: Climb on heading 053° to 1220, then on heading 300° or as assigned by ATC, for RADAR vectors to MTRCT, thence....

TAKEOFF RUNWAY 9: Climb on heading 095° to 1220, then on heading 300° or as assigned by ATC, for RADAR vectors to MTRCT, thence....

TAKEOFF RUNWAY 23: Climb on heading 233°, or as assigned by ATC, for RADAR vectors to MTRCT, thence....

TAKEOFF RUNWAY 27: Climb on heading 275°, or as assigned by ATC, for RADAR vectors to MTRCT, thence....

...on track 279° then on (transition). Maintain ATC assigned altitude, expect filed altitude 10 minutes after departure.

SMUUV TRANSITION (KAYLN3.SMUUV):

EC-1, 12 JUN 2025 to 10 JUL 2025