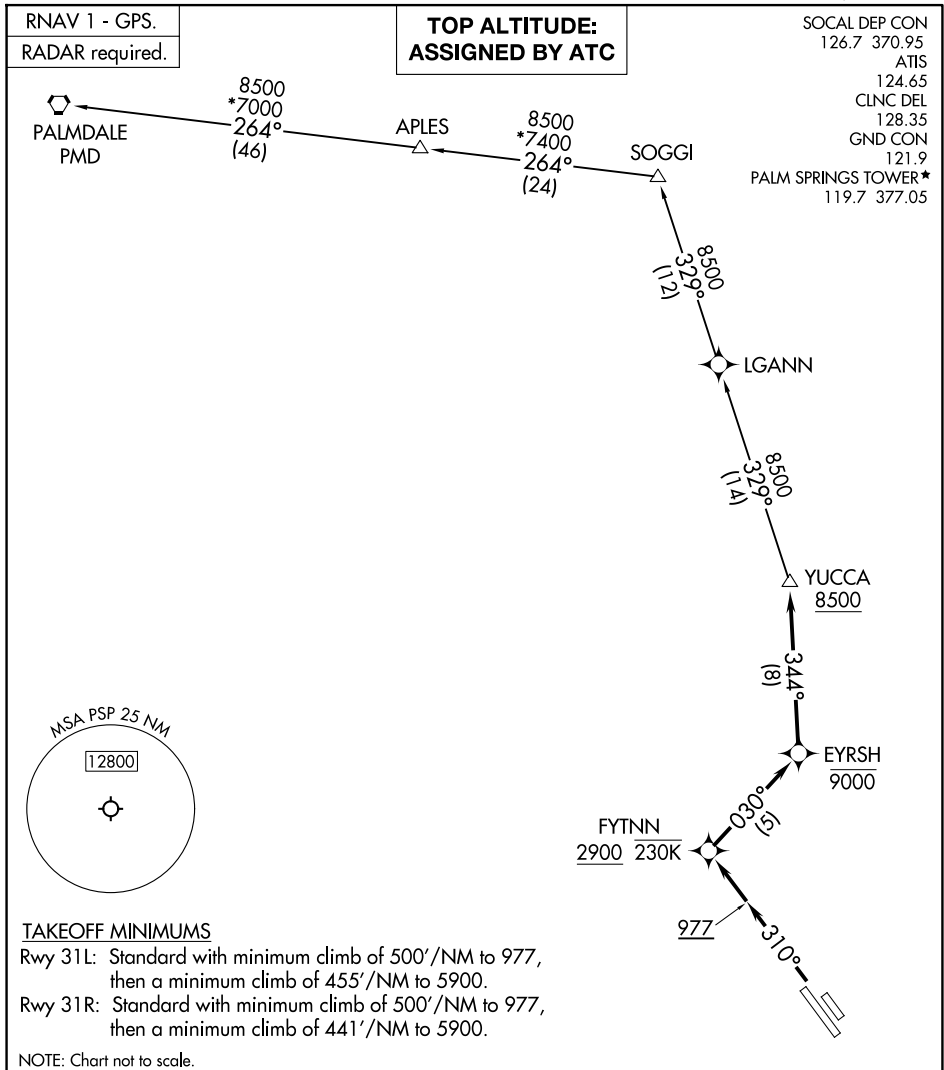


(YUCCA1.YUCCA) 25163

# YUCCA ONE DEPARTURE (RNAV)

AL-545 (FAA)

PALM SPRINGS INTL (PSP)  
PALM SPRINGS, CALIFORNIA



SW-3, 12 JUN 2025 to 10 JUL 2025

SW-3, 12 JUN 2025 to 10 JUL 2025

### TAKEOFF MINIMUMS

- Rwy 31L: Standard with minimum climb of 500'/NM to 977, then a minimum climb of 455'/NM to 5900.
- Rwy 31R: Standard with minimum climb of 500'/NM to 977, then a minimum climb of 441'/NM to 5900.

NOTE: Chart not to scale.

### DEPARTURE ROUTE DESCRIPTION

TAKEOFF RUNWAYS 31L/R: Climb on heading 310° to 977, then direct FYTNN at or above 2900 at or below 230K, thence . . . .

. . . .on track 030° to cross EYRSH at or below 9000, then on track 344° to cross YUCCA at or above 8500, then on assigned (transition). Maintain ATC assigned altitude, expect filed altitude 10 minutes after departure.

PALMDALE TRANSITION (YUCCA1.PMD)

# YUCCA ONE DEPARTURE (RNAV)

(YUCCA1.YUCCA) 12JUN25

PALM SPRINGS, CALIFORNIA  
PALM SPRINGS INTL (PSP)