

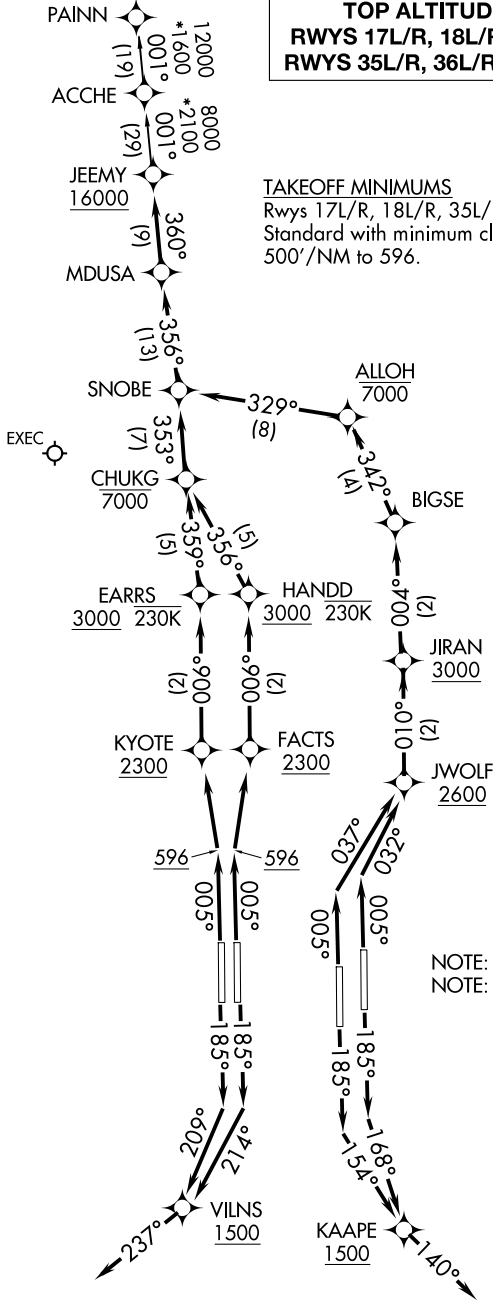
# JEEMY FOUR DEPARTURE (RNAV)

**TOP ALTITUDE:**  
**RWYS 17L/R, 18L/R: 7000**  
**RWYS 35L/R, 36L/R: 16000**

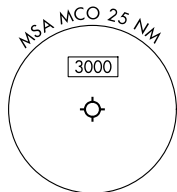
ORLANDO DEP CON  
124.8 307.0 (North)  
120.15 284.7 (South)  
D-ATIS DEP  
120.525  
CLNC DEL  
134.7 341.7  
CPDLC  
GND CON  
126.4 (East)  
121.8 (West)  
ORLANDO TOWER  
118.45 253.5  
(Rwys 17L-35R, 17R-35L)  
124.3 253.5  
(Rwys 18L-36R, 18R-36L)

**TAKEOFF MINIMUMS**  
Rwys 17L/R, 18L/R, 35L/R, 36L/R:  
Standard with minimum climb of  
500'/NM to 596.

RNAV 1 - DME/DME/IRU or GPS.  
RADAR required.



(CONTINUED ON FOLLOWING PAGE)



NOTE: Chart not to scale.

SE-3, 12 JUN 2025 to 10 JUL 2025

SE-3, 12 JUN 2025 to 10 JUL 2025