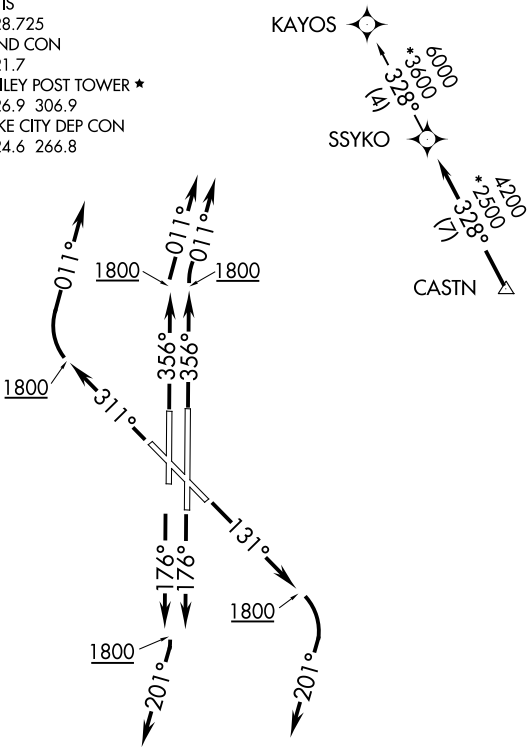


SSYKO THREE DEPARTURE (RNAV)

ATIS  
128.725  
GND CON  
121.7  
WILEY POST TOWER ★  
126.9 306.9  
OKE CITY DEP CON  
124.6 266.8

**TOP ALTITUDE:  
ASSIGNED BY ATC**

TAKEOFF MINIMUMS:  
Rwys 13, 17L/R, 31, 35L/R:  
Standard with minimum climb  
of 500' per NM to 2100.



NOTE: RADAR required.  
NOTE: DME/DME/IRU or GPS required.  
NOTE: RNAV 1.

NOTE: Chart not to scale.



DEPARTURE ROUTE DESCRIPTION

TAKEOFF RWY 13: Climb heading 131° to 1800, then right turn heading 201° or as assigned by ATC, expect RADAR vectors to CASTN, thence . . . .  
TAKEOFF RWYS 17L/R: Climb on heading 176° to 1800, then right turn heading 201° or as assigned by ATC, expect RADAR vectors to CASTN, thence . . . .  
TAKEOFF RWY 31: Climb on heading 311° to 1800, then right turn heading 011° or as assigned by ATC, expect RADAR vectors to CASTN, thence . . . .  
TAKEOFF RWY 35L: Climb on heading 356° to 1800, then heading 011° or as assigned by ATC, expect RADAR vectors to CASTN, thence . . . .  
TAKEOFF RWY 35R: Climb on heading 356° to 1800, then right turn heading 011° or as assigned by ATC, expect RADAR vectors to CASTN, thence . . . .

. . . . on track 328° to SSYKO, then on (transition). Maintain 3000 or as assigned by ATC. Expect filed altitude 10 minutes after departure.

KAYOS TRANSITION (SSYKO3.KAYOS):

SSYKO THREE DEPARTURE (RNAV)