

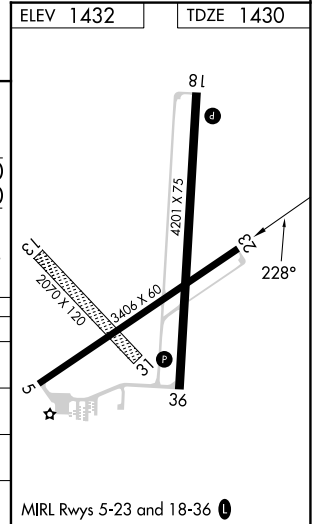
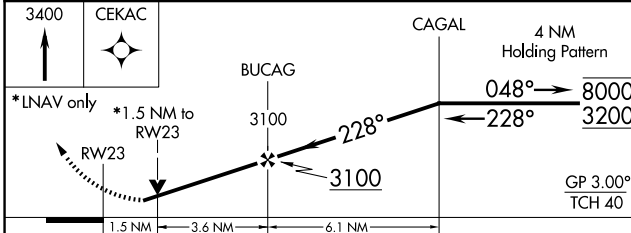
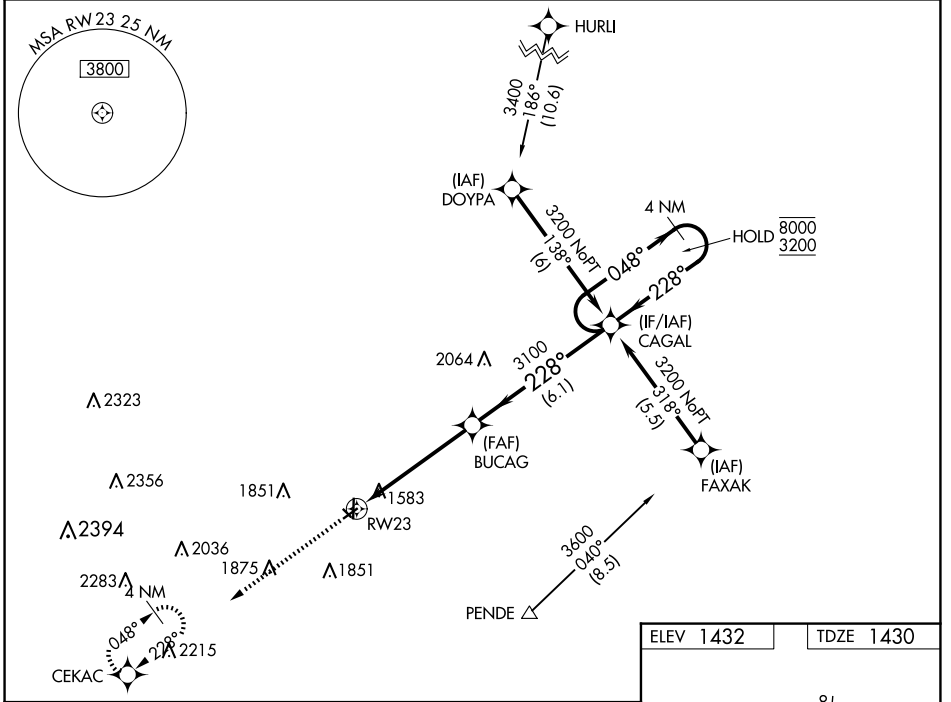
WAAS CH 82523 W23A	APP CRS 228°	Rwy Idg 3406 TDZE 1430 Apt Elev 1432
--	------------------------	---

RNAV (GPS) RWY 23

WAYNE MUNI/STAN MORRIS FLD (L.C.G)

RNP APCH.	MISSED APPROACH: Climb to 3400 direct CEKAC and hold.
<p>▼ Circling NA to Rwy 13 and 31. Rwy 23 helicopter visibility reduction below $\frac{3}{4}$ SM NA. For uncompensated Baro-VNAV systems, LNAV/VNAV NA below -17°C or above 54°C.</p>	

AWOS-3 120.125	SIoux CITY APP CON * 124.6 307.0	UNICOM 122.8 (CTAF) ①
--------------------------	--	---------------------------------



CATEGORY	A	B	C	D
LPV DA	1866-1½	436 (500-1½)		NA
LNAV/VNAV DA	1869-1½	439 (500-1½)		NA
LNAV MDA	1940-1	510 (600-1)		NA
CIRCLING	2000-1	568 (600-1)		NA

NC-2, 12 JUN 2025 to 10 JUL 2025

NC-2, 12 JUN 2025 to 10 JUL 2025