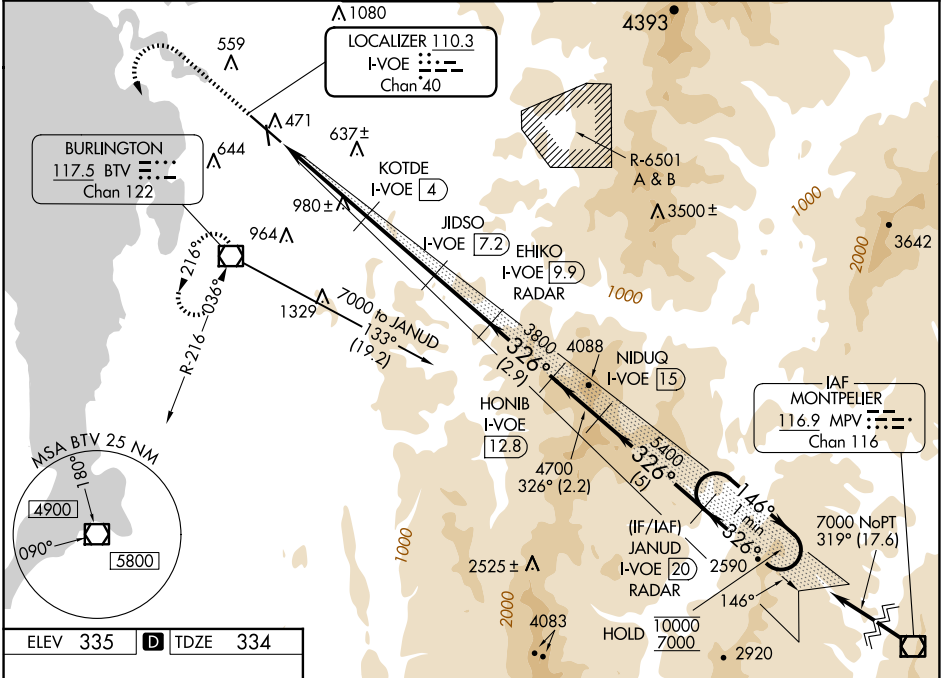


LOC/DME I-VOE 110.3 Chan 40	APP CRS 326°	Rwy Idg TDZE Apt Elev	7819 334 335
---	------------------------	-----------------------------	---

ILS or LOC RWY 33

PATRICK LEAHY BURLINGTON INTL (BTV)

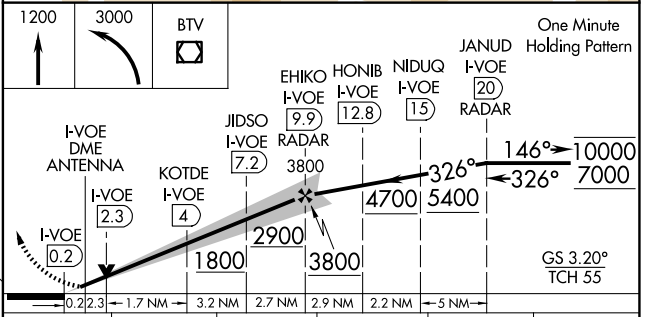
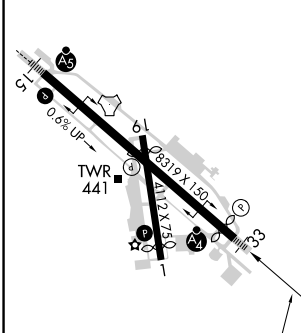
DME or RADAR required.		MISSED APPROACH: Climb to 1200 then climbing left turn to 3000 direct BTV VOR/DME and hold, continue climb-in-hold to 3000. (TACAN aircraft climb to 6000 on heading 326° for RADAR vectors. RADAR required).	
<p>⚠ Circling Rwy 1 NA at night. Autopilot coupled approach NA. Rwy 33 helicopter visibility reduction below RVR 4000 NA. For inop ALS, increase S-ILS-33 all Cats visibility to RVR 4500.</p> <p>❄ -10°C Inop table does not apply to S-LOC-33 Cats C, D and E.</p>		<p>MAJLSP </p>	
ATIS 123.8 269.9	BURLINGTON APP CON * 121.1 278.8	BURLINGTON TOWER * 118.3 (CTAF) 257.8	UNICOM 122.95
		GND CON 126.3 348.6	CLNC DEL 119.15



NE-1, 10 JUL 2025 to 07 AUG 2025

NE-1, 10 JUL 2025 to 07 AUG 2025

ELEV 335	D	TDZE 334
----------	----------	----------



MIRL Rwy 1-19 0 HIRL Rwy 15-33 0	FAF to MAP 10 NM				
Knots	60	90	120	150	180
Min:Sec	10:00	6:40	5:00	4:00	3:20
CATEGORY	A	B	C	D	E
S-ILS 33	608/40		274 (300-¾)		
S-LOC 33	1240/55	906 (1000-1)	1240-2½	906 (1000-2½)	
C CIRCLING	1240-1¼	905 (1000-1¼)	1240-2¾ 905 (1000-2¾)	1380-3 1045 (1100-3)	1400-3 1065 (1100-3)