

LOC/DME I-IRK 111.5 Chan 52	APP CRS 357°	Rwy Idg TDZE Apt Elev	6005 965 966
--	------------------------	-----------------------------	---

ILS or LOC RWY 36

KIRKSVILLE RGNL (IRK)

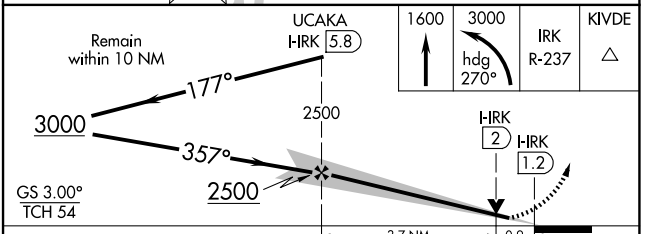
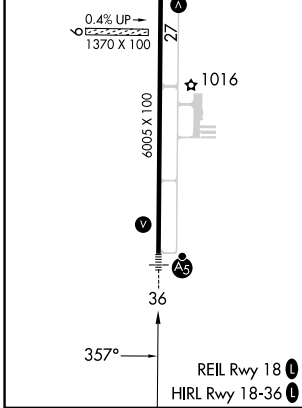
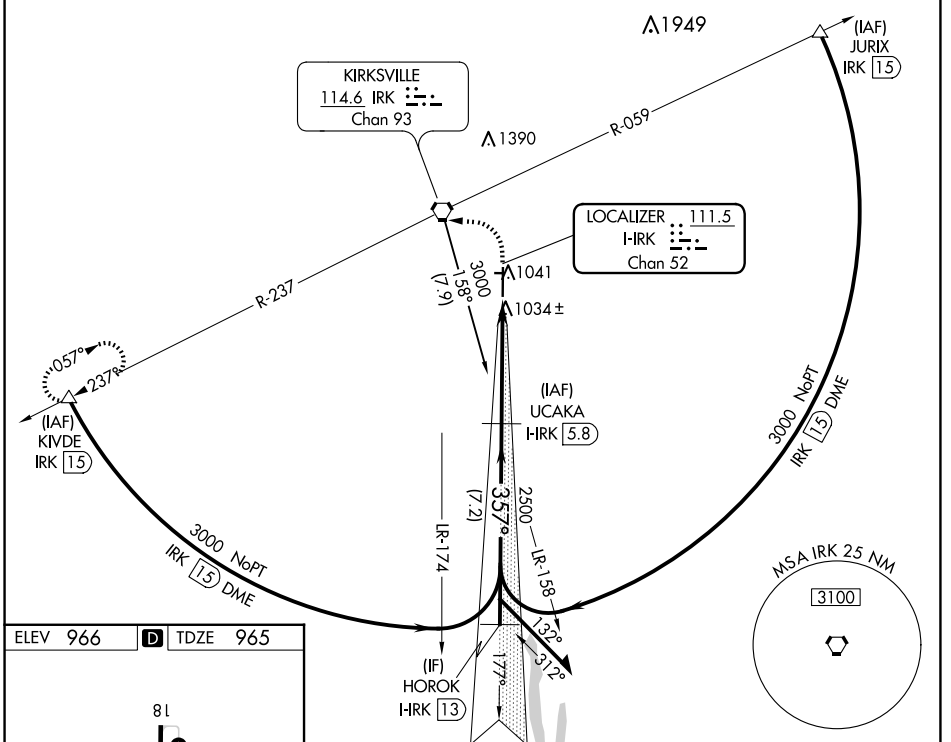
DME required.

MALSRR 

MISSED APPROACH: Climb to 1600 then climbing left turn to 3000 on heading 270° and IRK VORTAC R-237 to KIVDE/IRK 1.5 DME and hold.

 Circling NA to Rwys 9 and 27.

ASOS 121.125	KANSAS CITY CENTER 132.6 370.9	UNICOM 122.8 (CTAF) 0
------------------------	--	---------------------------------



CATEGORY	A	B	C	D
S-ILS 36		1165-½	200 (200-½)	
S-LOC 36		1300-½	335 (400-½)	
CIRCLING	1400-1 434 (500-1)	1440-1 474 (500-1)	1460-1½ 494 (500-1½)	1540-2 574 (600-2)

NC-3, 10 JUL 2025 to 07 AUG 2025

NC-3, 10 JUL 2025 to 07 AUG 2025