

RNAV (RNP) Z RWY 31R

JOHN F KENNEDY INTL (JFK)

APP CRS	Rwy Idg	8486
314°	TDZE	12
	Apt Elev	13

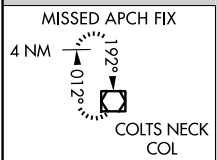
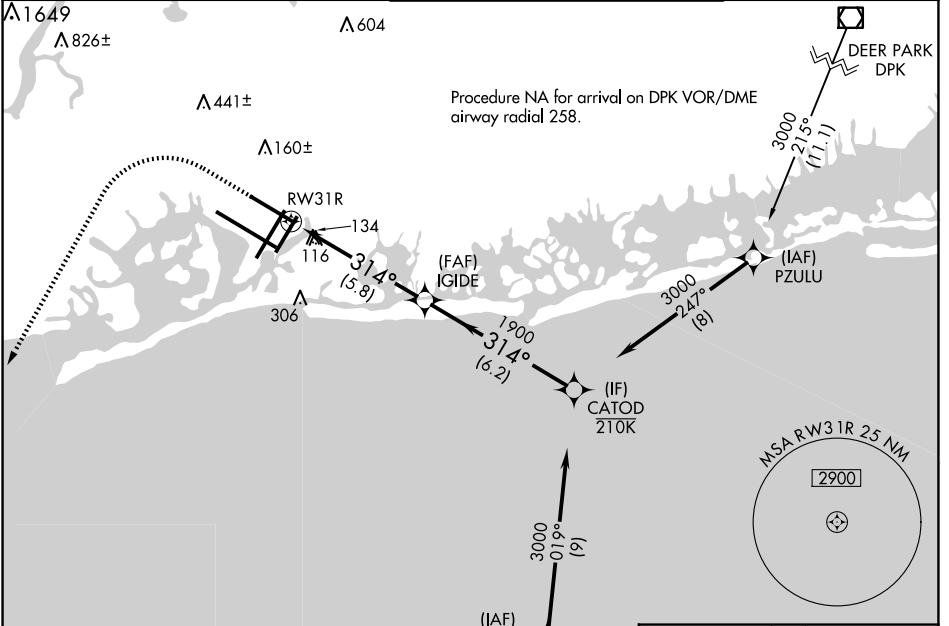
RNP AR APCH.

▼ For uncompensated Baro-VNAV systems, procedure NA below -12°C or above 54°C. Simultaneous approach authorized. Use of FD or AP required during simultaneous operations.

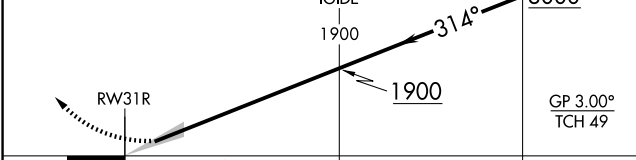
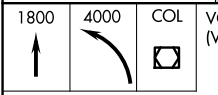
MALSR

MISSED APPROACH: Climb to 1800 then climbing left turn to 4000 direct COL VOR/DME and hold.

D-ATIS (ARR/DEP) (ARR-NE) (ARR-SW)	NEW YORK APP CON	KENNEDY TOWER Rwys 4R/22L and 13L/31R		GND CON	CLNC DEL	CPDLC
128.725 117.7 115.4	128.125 269.0	119.1 281.55	123.9 281.55	121.9 348.6	135.05 348.6	
128.725 117.7 115.4		Rwys 4L/22R and 13R/31L				



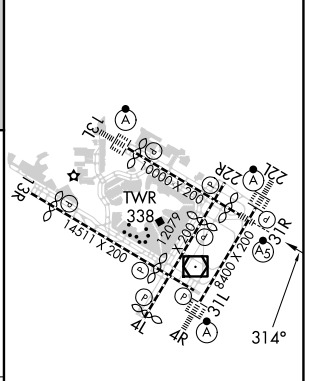
VGSI and RNAV glidepath not coincident (VGSI Angle 3.00/TCH 54).



CATEGORY	A	B	C	D
RNP 0.30 DA		458/50	446 (500-1)	

AUTHORIZATION REQUIRED

ELEV	13	TDZE	12
------	----	------	----



RLS Rwys 13L and 13R

HIRL all Rwys

TDZ/CL Rwys 4L, 4R, 13L, 22L and 31R

NE-2, 10 JUL 2025 to 07 AUG 2025

NE-2, 10 JUL 2025 to 07 AUG 2025