

LOC/DME I-C/JN 110.75 Chan 44 (Y)	APP CRS 186°	Rwy Ldg 8000 TDZE 868 Apt Elev 896
--	------------------------	--

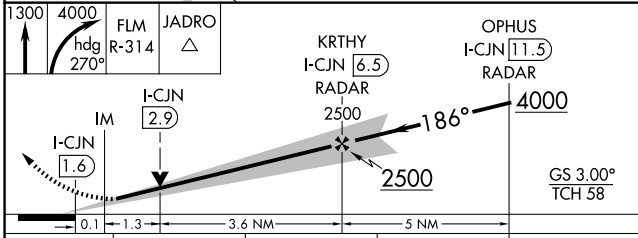
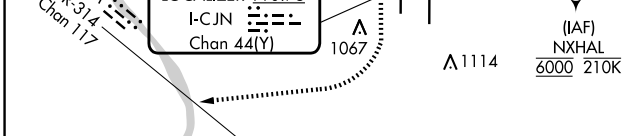
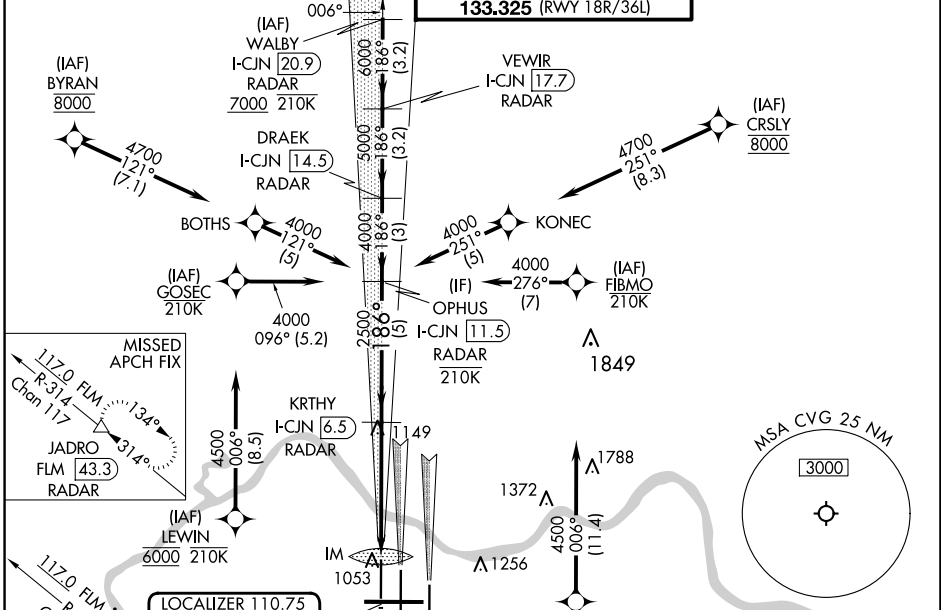
ILS or LOC RWY 18R

CINCINNATI/NORTHERN KENTUCKY INTL (CVG)

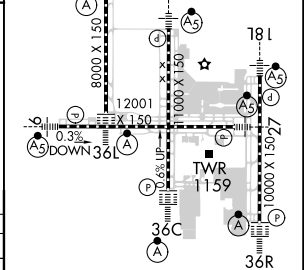
RNP APCH - GPS. From BYRAN, CRSLY, GOSEC, FIBMO, LEWIN and NXHAL.
DME or RADAR required. RADAR required for procedure entry at WALBY.
For inop ALS, increase S-LOC 18R Cat C/D visibility to 1 1/2 SM.
Simultaneous approach authorized with Rwy 18L/C. Use of FD or AP required during simultaneous operations.

ALSIF-2
MISSED APPROACH: Climb to 1300 then climbing right turn to 4000 on heading 270° and FLM VOR/DME R-314 to JADRO/FLM 43.3 DME/RADAR and hold.

D-ATIS ARR 134.375	DEP 135.3	CINCINNATI APP CON 119.7 363.15 (090°-269°) 123.875 363.15 (270°-089°)	CINCINNATI TOWER 118.975 360.85 (RWY 18L/36R) 118.3 (RWYS 18C/36C, 09/27) 133.325 (RWY 18R/36L)	GND CON 121.7	CLNC DEL 127.175	CPDLC
---------------------------------	---------------------	--	---	-------------------------	----------------------------	-------



ELEV 896	TDZE 868
----------	----------



CATEGORY	A	B	C	D
S-ILS 18R	1068/18 200 (200-1/2)			
S-LOC 18R	1360/24	492 (500-1/2)	1360/50	492 (500-1)
CIRCLING	1460-1	564 (600-1)	1560-1 3/4 664 (700-1 3/4)	1560-2 664 (700-2)

HRL all Rvys TDZ/CL all Rvys except 27					
FAF to MAP 5 NM					
Knots	60	90	120	150	180
Min:Sec	5:00	3:20	2:30	2:00	1:40

SE-1, 10 JUL 2025 to 07 AUG 2025

SE-1, 10 JUL 2025 to 07 AUG 2025