

OXNARD, CALIFORNIA

# TACAN Z RWY 3

POINT MUGU NAS  
(NAVAL BASE VENTURA CO)(KNTD)

TACAN NTD Chan <b>43</b>	APCH CRS <b>026°</b>	Rwy Idg <b>11,102</b> TDZE <b>10</b> Arprt Elev <b>13</b>
-----------------------------	-------------------------	---

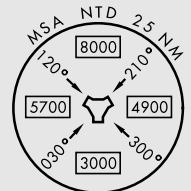
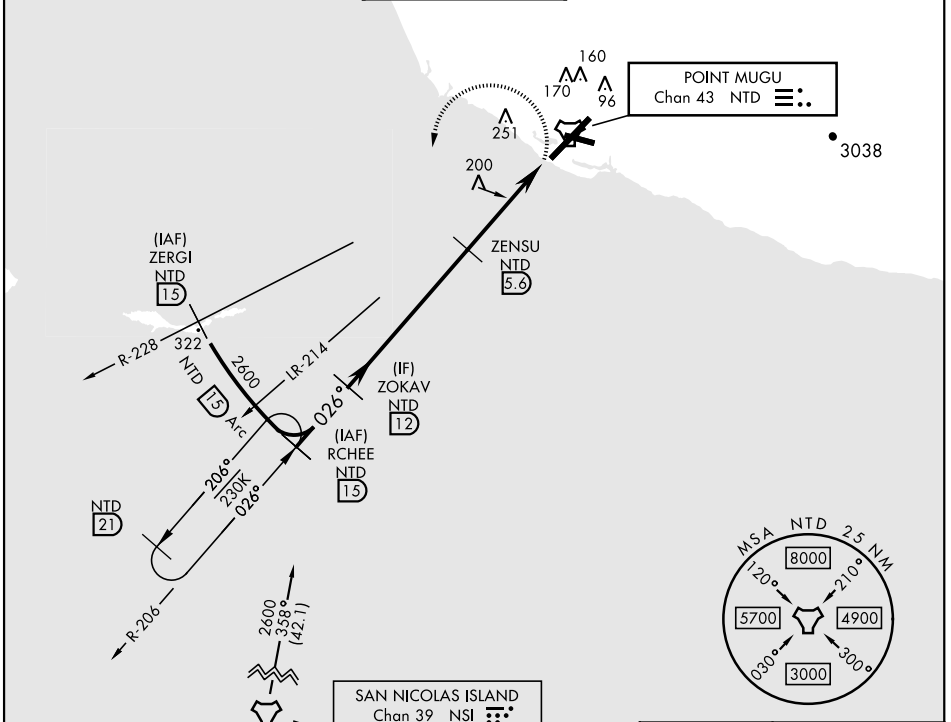
[USN]

▼ \*When ALS inop, increase CAT AB vis to 1 mile, CAT CDE vis to 1 3/8 miles.  
 \*\*Circling not authorized E of Rwy 3-21.



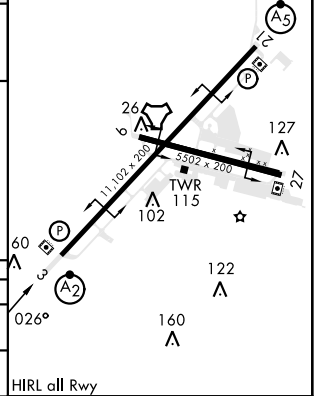
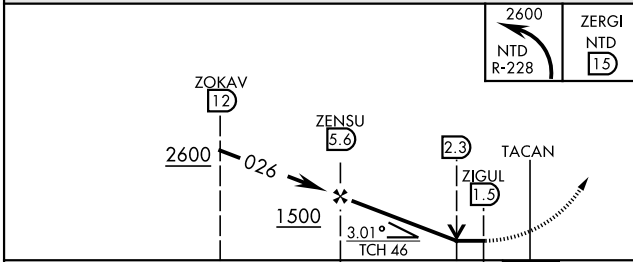
MISSED APPROACH: Climbing left turn to 2600. Intercept the NTD TACAN R-228, then via NTD R-228 to ZERGI, Arc SW of NTD via the 15 DME arc to RCHEE and hold.

ATIS ★ <b>125.55 363.05</b>	POINT MUGU APP CON <b>128.65 307.275</b>	POINT MUGU TOWER ★ <b>124.85 290.375</b>	GND CON <b>121.6 360.2</b>	CLNC DEL <b>120.75 279.55</b>	ASR/PAR
--------------------------------	---	---	-------------------------------	----------------------------------	---------



EMERG SAFE ALT 100 NM 12,100

ELEV	13
TDZE	10



CATEGORY	A	B	C	D	E
S-3 *	460-3/4 450 (500-3/4)		460-1 450 (500-1)		
CIRCLING **	460-1 447 (500-1)	480-1 467 (500-1)	480-1 1/2 467 (500-1 1/2)	580-2 567 (600-2)	NA

HIRL all Rwy

OXNARD, CALIFORNIA  
Amdt 3 31DEC20

34°07'N-119°07'W

POINT MUGU NAS (KNTD)  
(NAVAL BASE VENTURA CO)  
**TACAN Z RWY 3**

SW-3, 10 JUL 2025 to 07 AUG 2025

SW-3, 10 JUL 2025 to 07 AUG 2025