

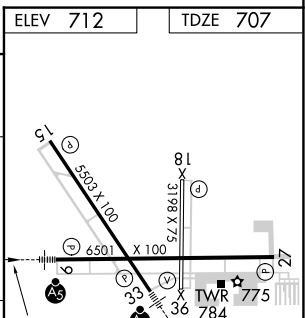
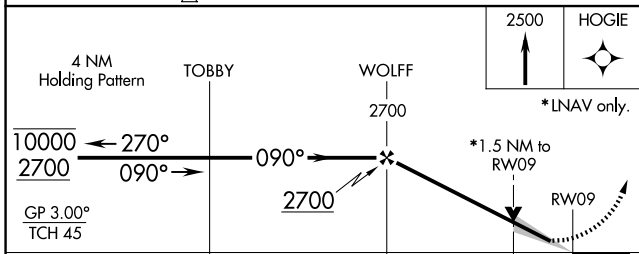
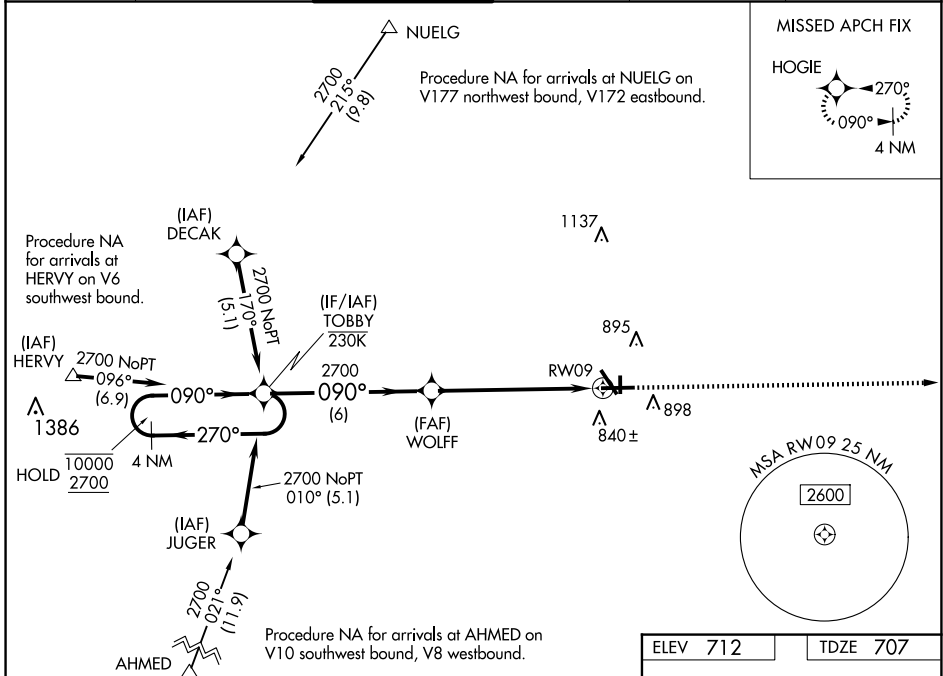
WAAS CH <b>45522</b> <b>W09A</b>	APP CRS <b>090°</b>	Rwy Idg <b>6501</b> TDZE <b>707</b> Apt Elev <b>712</b>
--	------------------------	---

# RNAV (GPS) RWY 9

AURORA MUNI (A.R.R.)

RNP APCH - GPS.		MALSR	MISSED APPROACH: Climb to 2500 direct HOGIE and hold.
<p>▼ For uncompensated Baro-VNAV systems, LNAV/VNAV NA below -20°C or above 54°C. For inop APCH, increase LNAV Cat C/D visibility to 1½ SM.</p>			

ATIS <b>125.85</b>	CHICAGO APP CON <b>133.5 349.0</b>	AURORA TOWER* <b>120.6</b> (CTAF) <b>0</b>	GND CON <b>121.7</b>	CLNC DEL <b>121.7</b> (When tower closed)	UNICOM <b>122.95 123.5</b>
-----------------------	---------------------------------------	---	-------------------------	---	-------------------------------



CATEGORY	A	B	C	D
LPV DA		957-½	250 (300-½)	
LNAV/VNAV DA		1035-½	328 (400-½)	
LNAV MDA	1220-½	513 (600-½)	1220-1	513 (600-1)
CIRCLING	1220-1	508 (600-1)	1300-1½ 588 (600-1½)	1320-2 608 (700-2)

MIRL Rwy 18-36

HIRL Rwy 15-33 and 9-27

REIL Rwy 15, 18, 27, and 36

EC-3, 10 JUL 2025 to 07 AUG 2025

EC-3, 10 JUL 2025 to 07 AUG 2025