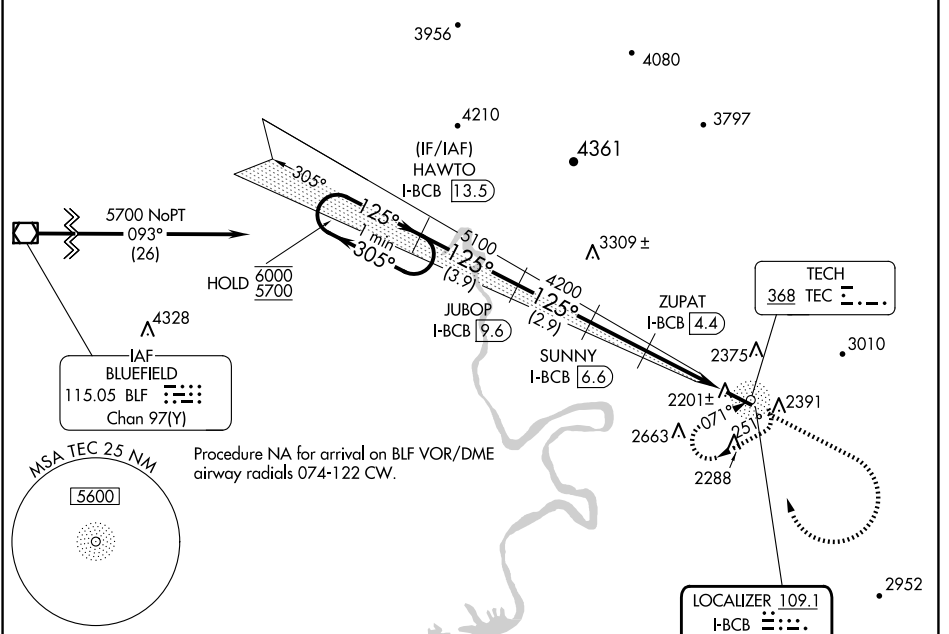


LOC/DME I-BCB 109.1 Chan 28	APP CRS 125°	Rwy Ldg TDZE 5501 2119	Apt Elev 2120
---	------------------------	--	-------------------------

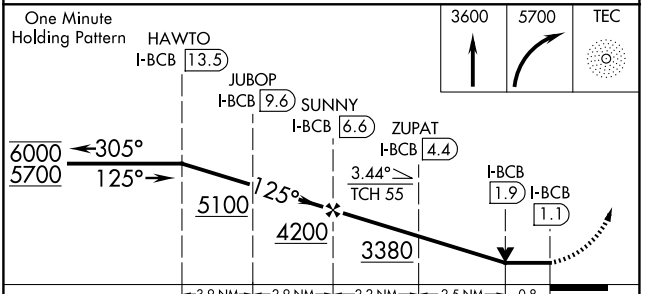
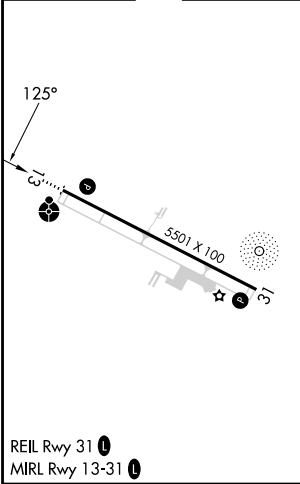
LOC RWY 13

VIRGINIA TECH/MONTGOMERY EXEC (BCB)

ADF and DME required.		ODALS MISSED APPROACH: Climb to 3600 then climbing right turn to 5700 direct TEC NDB and hold, continue climb-in-hold to 5700.	
<p>▼ Rwy 13 helicopter visibility reduction below 1 SM NA. ▲ NA Inop table does not apply.</p>			
AWOS-3 133.325	ROANOKE APP CON 126.9 339.8	CLNC DEL 124.85	UNICOM 123.05 (CTAF) 0



ELEV 2120	TDZE 2119
------------------	------------------



CATEGORY	A	B	C	D
S-13	2480-1 361 (400-1)			NA
CIRCLING	2760-1 640 (700-1)	2820-1 700 (700-1)	2980-2½ 860 (900-2½)	NA

NE-3, 10 JUL 2025 to 07 AUG 2025

NE-3, 10 JUL 2025 to 07 AUG 2025