

WAAS CH 86447 W15A	APP CRS 149°	Rwy Ldg TDZE Apt Elev	3848 805 811
--	------------------------	-----------------------------	---

RNAV (GPS) RWY 15

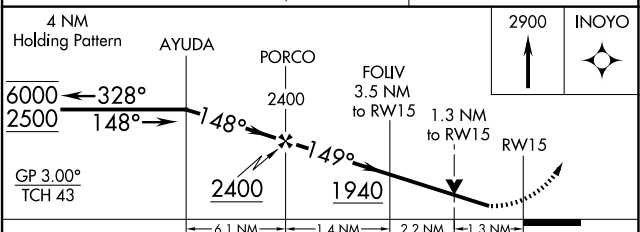
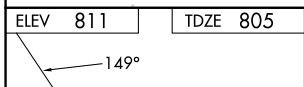
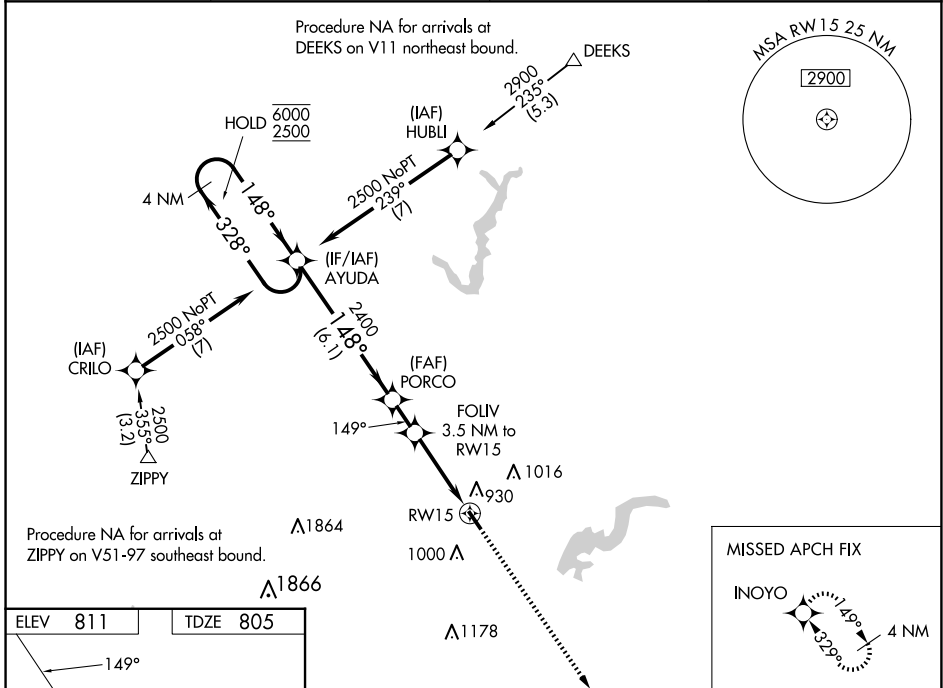
INDIANAPOLIS METRO (UMP)

RNP APCH - GPS.

- Baro-VNAV and VDP NA when using IND altimeter setting. Rwy 15 helicopter visibility reduction below 3/4 SM NA. For uncompensated Baro-VNAV systems, LNAV/VNAV NA below -16°C or above 54°C.
- When local altimeter setting not received, use IND altimeter setting and increase LPV DA to 1098 feet. Increase LNAV/VNAV DA to 1173 feet; increase all MDAs 60 feet and LNAV visibility Cat C 1/2 SM.

MISSED APPROACH:
Climb to 2900 direct INOYO and hold.

AWOS-3PT 119.375	INDIANAPOLIS APP CON 127.15 317.8	CLNC DEL 121.625	UNICOM 123.0 (CTAF) 0
----------------------------	---	----------------------------	---------------------------------



CATEGORY	A	B	C	D
LPV DA		1055-1 250 (300-1)		NA
LNAV/VNAV DA		1130-1 325 (400-1)		NA
LNAV MDA	1240-1	435 (500-1)	1240-1 1/4 435 (500-1 1/4)	NA
CIRCLING	1320-1 509 (600-1)	1340-1 529 (600-1)	1340-1 1/2 529 (600-1 1/2)	NA

MIRL Rwy 15-33 0
REIL Rwy 15 and 33 0

INDIANAPOLIS, INDIANA
Amdt 3 15MAY25

EC-2, 10 JUL 2025 to 07 AUG 2025

EC-2, 10 JUL 2025 to 07 AUG 2025