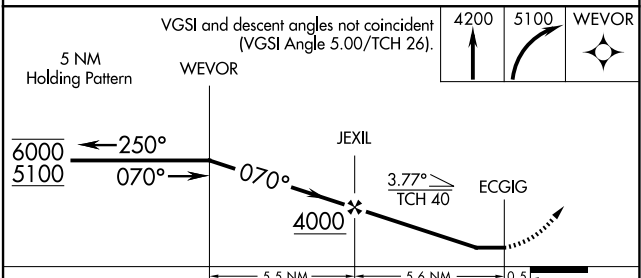
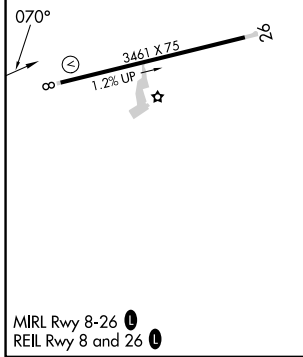
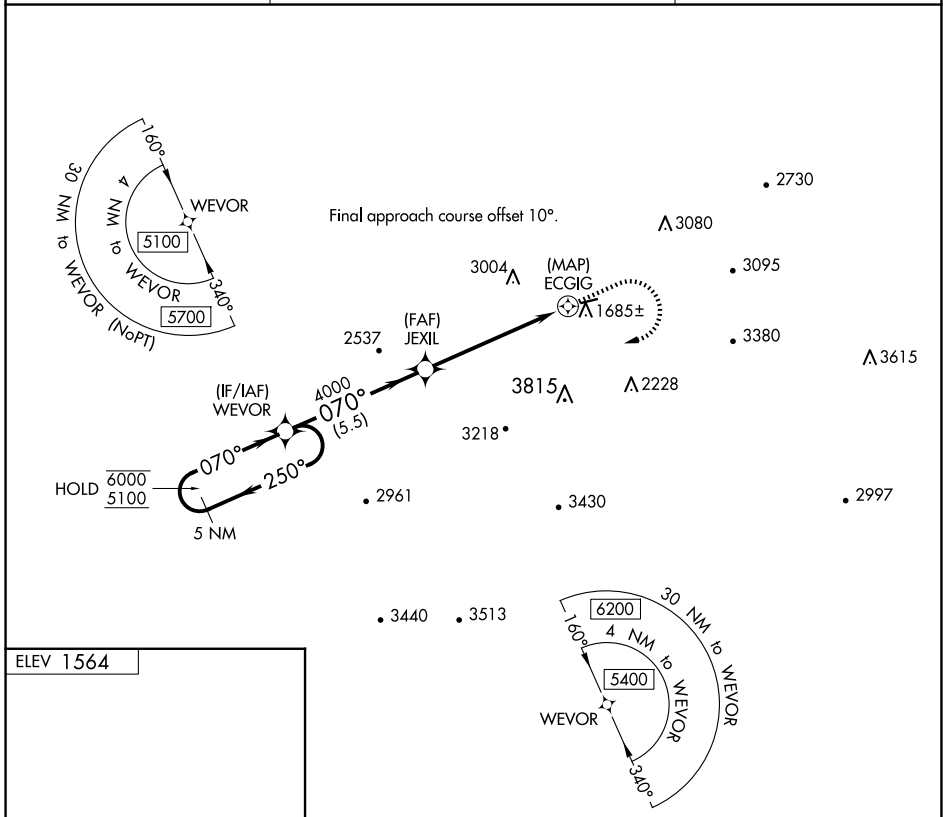


APP CRS 070°	Rwy Idg TDZE Apt Elev	N/A N/A 1564
------------------------	-----------------------------	---

RNAV (GPS)-A

TUCKER-GUTHRIE MEML (I35)

RNP APCH.		MISSED APPROACH: Climb to 4200 then climbing right turn to 5100 direct WEVOR and hold.
<p>▼ Circling NA north of Rwy 8-26. Procedure NA at night. ▲ Rwy 8 helicopter visibility reduction below 1 SM NA.</p>		
AWOS-3 118.35	INDIANAPOLIS CENTER 124.625 371.925	UNICOM 122.8 (CTAF)



CATEGORY	A	B	C	D
CIRCLING	2920-1¼ 1356 (1400-1¼)	2920-1½ 1356 (1400-1½)	3360-3 1796 (1800-3)	NA

SE-1, 10 JUL 2025 to 07 AUG 2025

SE-1, 10 JUL 2025 to 07 AUG 2025