

# DIXEE THREE ARRIVAL (RNAV)

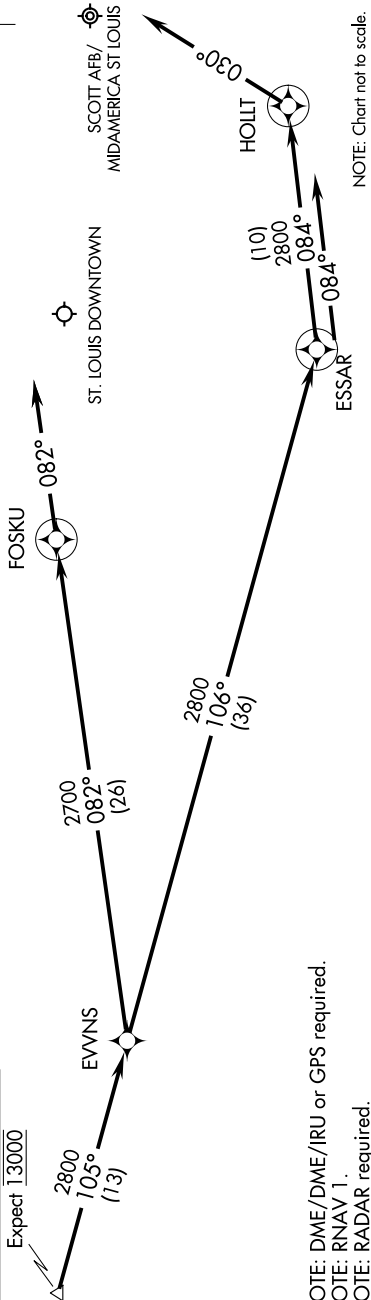
BELLEVILLE, ILLINOIS

EC-3, 07 AUG 2025 to 04 SEP 2025

ST LOUIS APP CON  
 128.1 307.05  
 BLV/KBLV ATIS \*  
 128.7 256.7  
 CFS ATIS  
 121.45

**DIXEE**  
**VERTICAL NAVIGATION**  
**PLANNING INFORMATION**

Expect 13000



NOTE: DME/DME/IRU or GPS required.  
 NOTE: RNAV 1.  
 NOTE: RADAR required.

## ARRIVAL ROUTE DESCRIPTION

### ST. LOUIS DOWNTOWN:

**LANDING RWY 12R:** From DIXEE on track 105° to EVNS, then on track 082° to FOSKU. Expect radar vector prior to FOSKU. If no heading received, track 082°.

**LANDING RWY 30L/R:** From DIXEE on track 105° to EVNS, then on track 106° to ESSAR, then on track 084° to HOLLT. Expect radar vector prior to HOLLT. If no heading received, track 030°.

### SCOTT AFB/MIDAMERICA ST LOUIS:

**LANDING RWYS 14L/R, 32L/R:** From DIXEE on track 105° to EVNS, then on track 106° to ESSAR. Expect radar vector prior to ESSAR. If no heading received, track 084°.

# DIXEE THREE ARRIVAL (RNAV)

BELLEVILLE, ILLINOIS

EC-3, 07 AUG 2025 to 04 SEP 2025