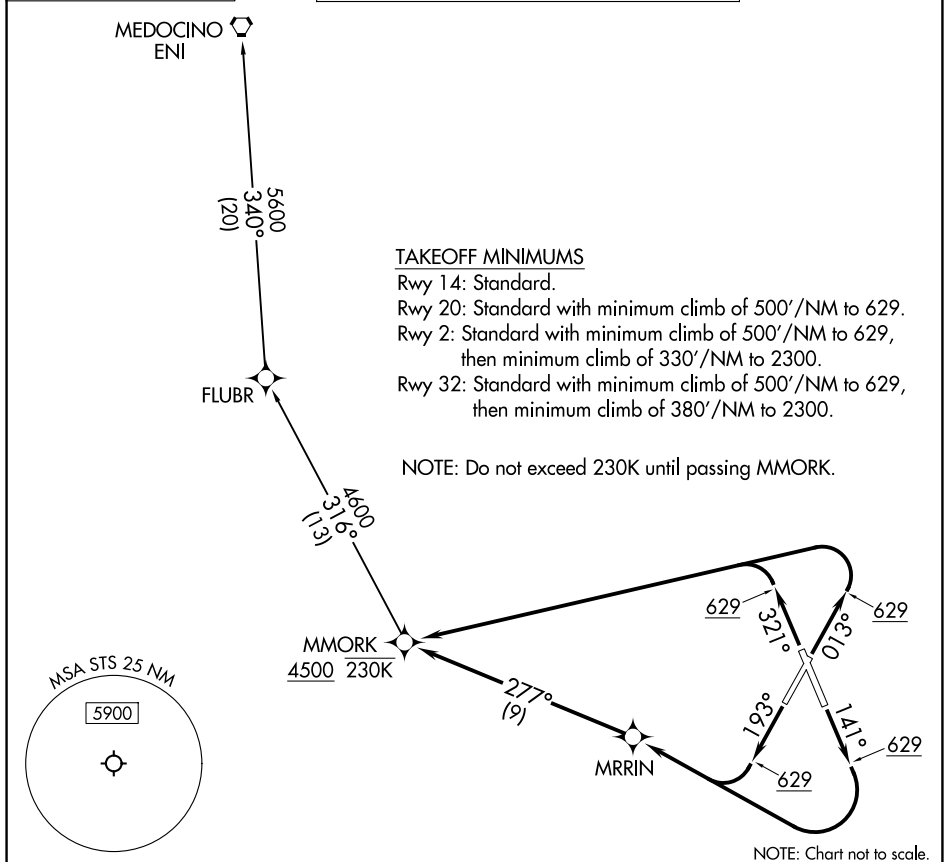


MMORK ONE DEPARTURE (RNAV)

SANTA ROSA, CALIFORNIA

TOP ALTITUDE: ASSIGNED BY ATC	RNAV 1 - DME/DME/IRU or GPS.	OAKLAND CENTER 127.8 353.5
	RADAR required for non-GPS equipped aircraft.	



DEPARTURE ROUTE DESCRIPTION

TAKEOFF RUNWAY 2: Climb on heading 013° to 629, then left turn direct to cross MMORK at or above 4500 and at or below 230K, thence

TAKEOFF RUNWAY 14: Climb on heading 141° to 629, then right turn direct MRRIN, then on depicted route, thence . . .

TAKEOFF RUNWAY 20: Climb on heading 193° to 629, then right turn direct MRRIN, then on depicted route, thence . . .

TAKEOFF RUNWAY 32: Climb on heading 321° to 629, then left turn direct to cross MMORK at or above 4500 and at or below 230K, thence

... on assigned transition, maintain ATC assigned altitude, expect filed altitude 10 minutes after departure.

MENDOCINO TRANSITION (MMORK1.ENI)