

LOC/DME I-HUM <b>110.5</b> Chan <b>42</b>	APP CRS <b>042°</b>	Rwy Ldg <b>8950</b> TDZE <b>8</b> Apt Elev <b>13</b>
---	------------------------	--

# ILS Y RWY 4R

DANIEL K INOUEY INTL (HNL) (PHNL)

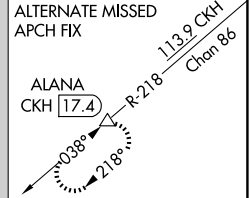
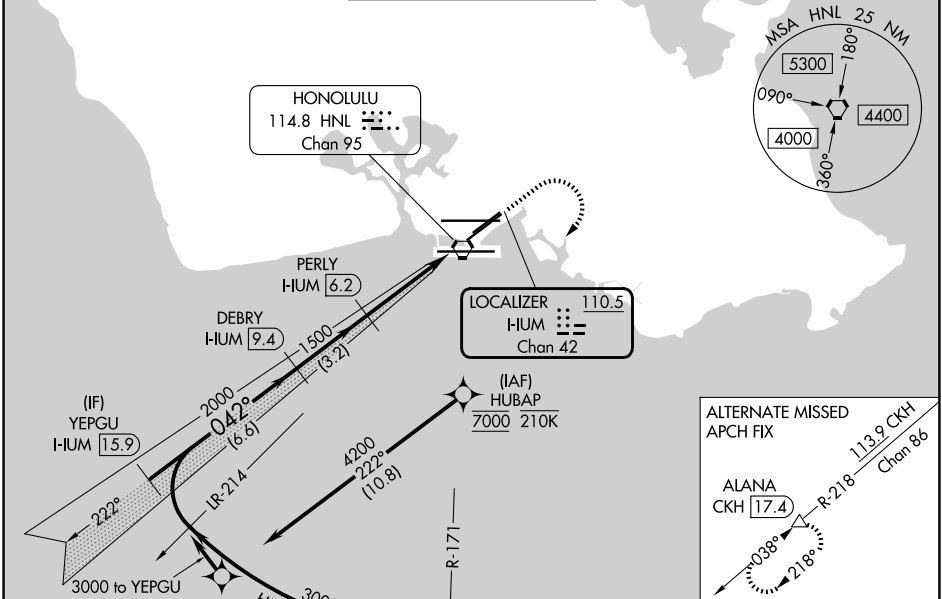
DME required. From HUBAP: RNAV 1-GPS required. DME or RADAR required for procedure entry.

For inop ALS, increase S-ILS 4R all Cats visibility to 7/8 SM.

MALSRS

MISSED APPROACH: Climb to 540 then climbing right turn to 3000 on heading 220° and on HNL VORTAC R-171 to ALANA INT/HNL 13.9 DME and hold. \*Missed approach requires minimum climb of 318 feet per NM to 1820. (If unable to meet climb gradient use S-ILS 4R minimums).

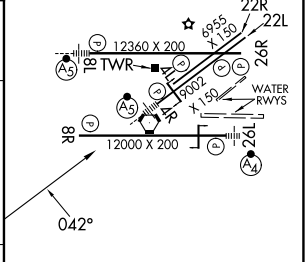
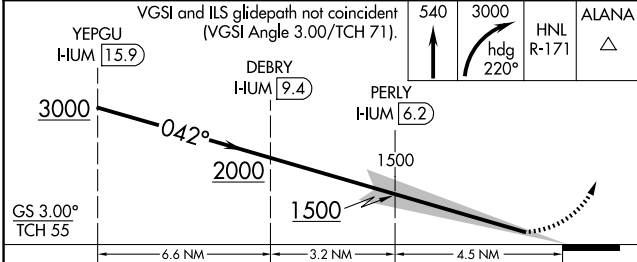
D-ATIS <b>127.9 251.15</b>	HCF APPROACH <b>118.3 269.0</b>	HONOLULU TOWER <b>118.1 257.8</b> <b>123.9 273.575</b> (8R/26L)	GND CON <b>121.9 348.6</b>	CLNC DEL <b>121.4 281.4</b>
-------------------------------	------------------------------------	---	-------------------------------	--------------------------------



ELEV 13	<b>D</b> TDZE 8
---------	-----------------

Procedure NA for arrivals at ALANA on V16 eastbound.

Procedure NA for arrivals at ALANA on V16 eastbound.



CATEGORY	A	B	C	D
S-ILS 4R*		258-1/2	250 (300-1/2)	
S-ILS 4R		308-1/2	299 (300-1/2)	

MIRL Rwy 4L-22R  
REIL Rws 4L, 8R, 22L, 22R, and 26R  
HIRL Rws 4R-22L, 8L-26R, and 8R-26L

PAC, 07 AUG 2025 to 02 OCT 2025

PAC, 07 AUG 2025 to 02 OCT 2025