

CHAKA FOUR ARRIVAL (RNAV)

SE-3, 07 AUG 2025 to 04 SEP 2025

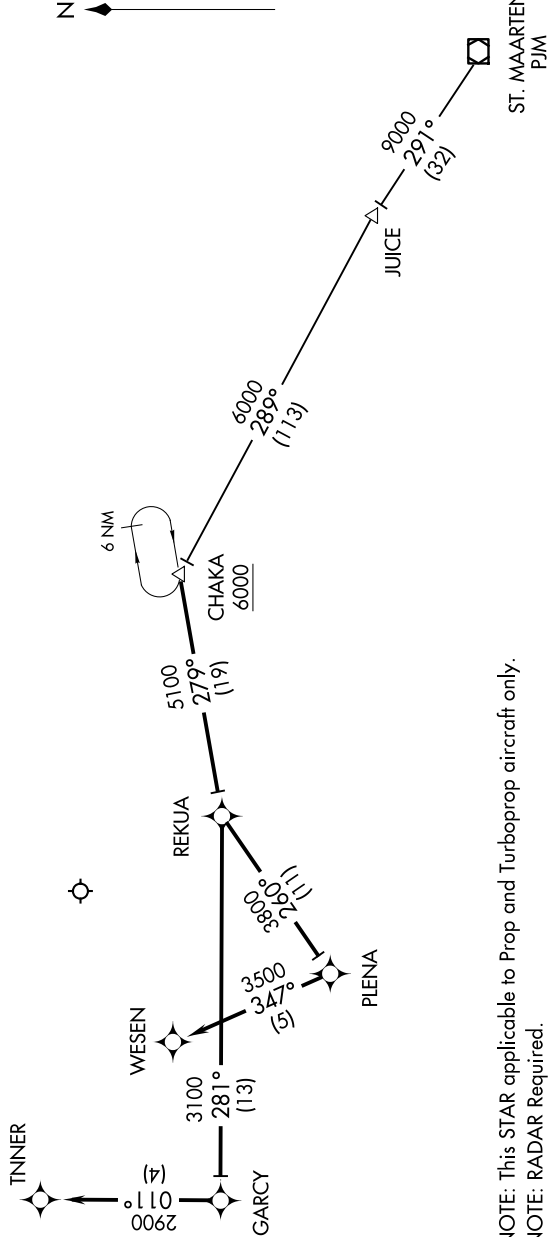
ARRIVAL ROUTE DESCRIPTION

ST MAARTEN TRANSITION (PJM.CHAKA4):

Landing East Rwy 08: From CHAKA on track 279° to REKUA, then on track 260° to PLENA, then on track 347° to WESEN.

Landing East Rwy 10: From CHAKA on track 279° to REKUA, then on track 281° to GARCY, then on track 011° to TNINNER.

SAN JUAN APP CON
(West & Southwest)
119.4 269.2
(North & East)
120.9 290.2
D-AITS
125.8



NOTE: Chart not to scale.

NOTE: This STAR applicable to Prop and Turboprop aircraft only.
NOTE: RADAR Required.
NOTE: GPS Required.
NOTE: RNAV 1.

CHAKA FOUR ARRIVAL (RNAV)

(CHAKA.CHAKA4) 13JAN11

SE-3, 07 AUG 2025 to 04 SEP 2025