

WAAS CH 62832 W31A	APP CRS 305°	Rwy Idg 5152 TDZE 350 Apt Elev 358
--	------------------------	---

RNAV (GPS) RWY 31

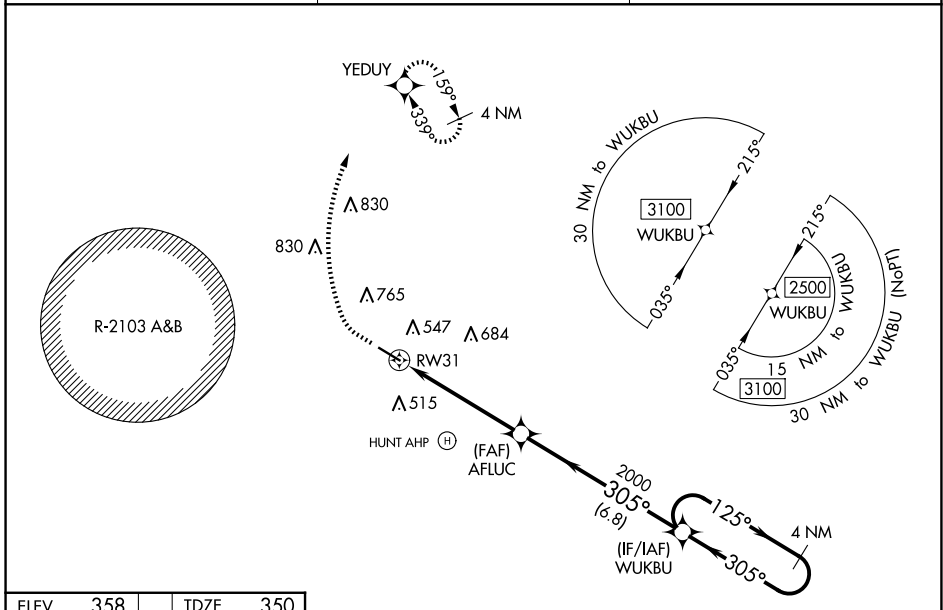
OZARK/BLACKWELL FLD (71J)

RNP APCH.

▽ Baro-VNAV NA. Use Dothan altimeter setting; when not received, use Cairns AAF (Fort Novossel) altimeter setting.
▲ NA Rwy 31 helicopter visibility reduction below ¾ SM NA. Circling Rwy 13, 31 NA at night.

MISSED APPROACH: Climb to 900 then climbing right turn to 2000 direct YEDUY and hold.

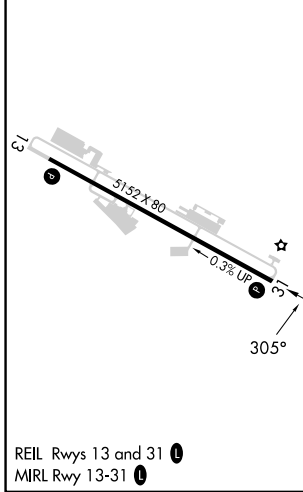
DHN ASOS 135.725	CAIRNS APP CON ★ 125.4 327.125	UNICOM 122.7 (CTAF) 0
----------------------------	--	---------------------------------



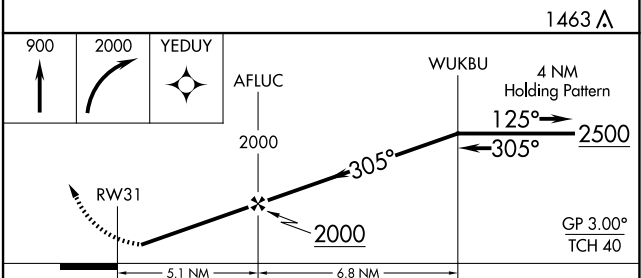
SE-4, 07 AUG 2025 to 04 SEP 2025

SE-4, 07 AUG 2025 to 04 SEP 2025

ELEV 358	TDZE 350
----------	----------



REIL Rws 13 and 31 **0**
MIRL Rwy 13-31 **0**



CATEGORY	A	B	C	D
LPV DA	661-1 310 (400-1)			NA
LNAV/VNAV DA	851-1¾ 501 (500-1¾)			NA
LNAV MDA	860-1 510 (600-1)	860-1⅜ 510 (600-1⅜)		NA
CIRCLING	900-1 542 (600-1)	1100-1¾ 742 (800-1¾)	1100-2¼ 742 (800-2¼)	NA