

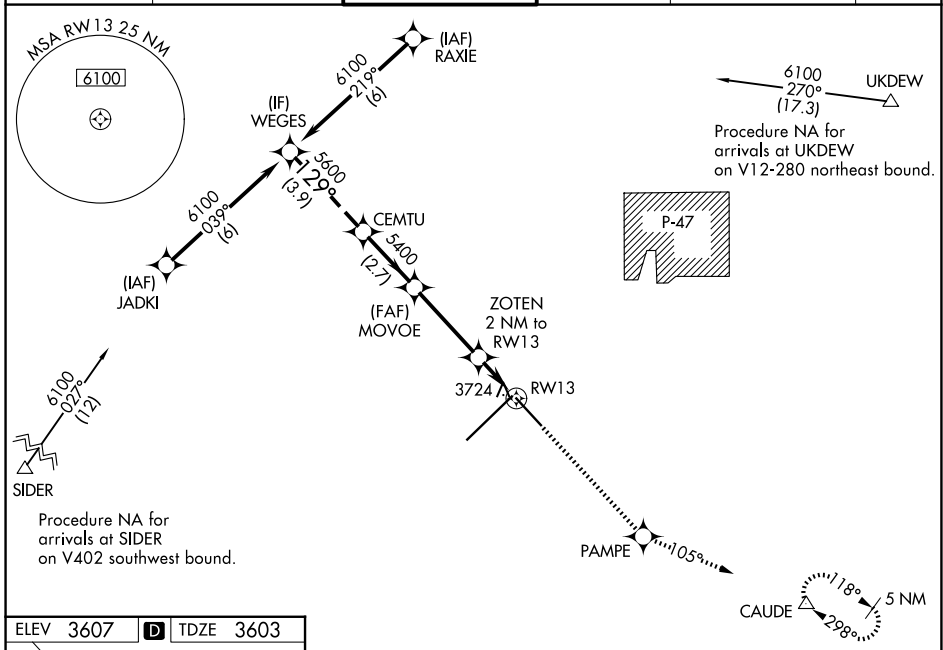
WAAS CH 57919 W13A	APP CRS 129°	Rwy Ldg TDZE Apt Elev 7901 3603 3607
--	------------------------	--

RNAV (GPS) Y RWY 13

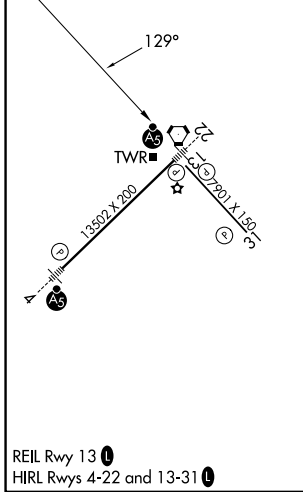
RICK HUSBAND AMARILLO INTL (AMA)

RNP APCH.		MISSED APPROACH: Climb to 5400 direct PAMPE and on track 105° to CAUDE and hold.			
<p>⚠ For uncompensated Baro-VNAV systems, LNAV/VNAV NA below -22°C or above 41°C.</p> <p>ASR</p>					

ATIS 118.85 350.3	AMARILLO APP CON* 119.5 307.0	AMARILLO TOWER* 118.3(CTAF) 257.9	GND CON 121.9 348.6	CLNC DEL 121.65 239.275	UNICOM 122.95
-----------------------------	---	---	-------------------------------	-----------------------------------	-------------------------



ELEV 3607	D	TDZE 3603
-----------	----------	-----------



	WEGES	CEMTU	MOVVOE	ZOTEN	PAMPE	CAUDE
	6100	5600	5400	5400	tr 105°	△
	Procedure Turn NA			2 NM to RWY 13	*1 NM to RWY 13	
	GP 3.00°		*4280			
	TCH 52					
	3.9 NM	2.7 NM	3.4 NM	1 NM	1 NM	
CATEGORY	A	B	C	D		
LPV DA		3803-3/4	200 (200-3/4)			
LNAV/VNAV DA		3976-1 1/4	373 (400-1 1/4)			
LNAV MDA		3980-1	377 (400-1)			3980-1 1/4 377 (400-1 1/4)
CIRCLING	4080-1	473 (500-1)		4240-1 3/4 633 (700-1 3/4)		4280-2 1/4 673 (700-2 1/4)

SC-2, 27 NOV 2025 to 25 DEC 2025

SC-2, 27 NOV 2025 to 25 DEC 2025