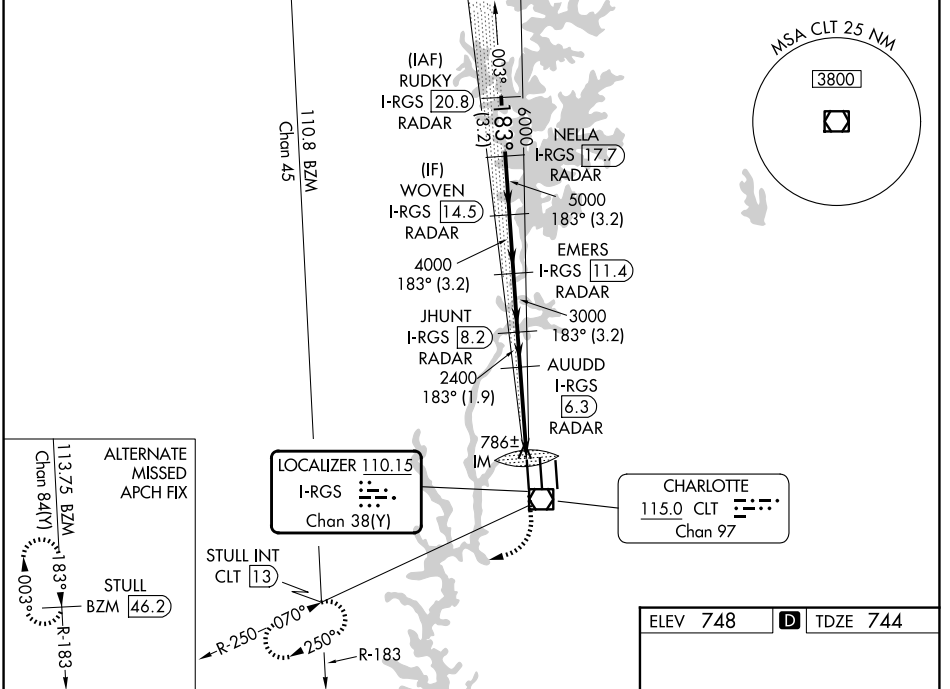


LOC/DME I-RGS 110.15 Chan 38(Y)	APP CRS 183°	Rwy Ldg TDZE 744 Apt Elev 748	9000
--	------------------------	---	-------------

ILS RWY 18R (CAT II & III)

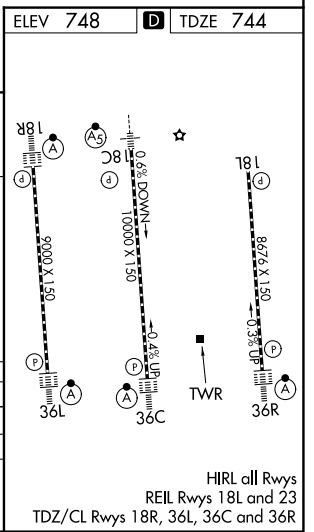
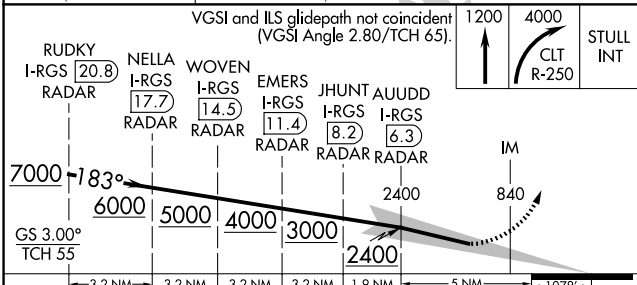
CHARLOTTE/DOUGLAS INTL (CLT)

RADAR required for procedure entry. DME or RADAR required. Simultaneous approach authorized.		ALSF-2 	MISSED APPROACH: Climb to 1200 then climbing right turn to 4000 on CLT VOR/DME R-250 to STULL INT/CLT 13 DME and hold, continue climb-in-hold to 4000.
D-ATIS 121.15	CHARLOTTE APP CON 128.325 (001°-119°) 257.2 (180°-359°) 120.05 (120°-295°) 307.8 (360°-179°) 134.75 (296°-360°)		CHARLOTTE TOWER 118.1 257.8 (Rwys 18L-36R) 126.4 257.8 (Rwy 18C-36C) 133.35 257.8 (Rwy 18R-36L)
		GND CON 121.8 348.6 (W) 121.9 348.6 (E)	



SE-2, 27 NOV 2025 to 25 DEC 2025

SE-2, 27 NOV 2025 to 25 DEC 2025



CATEGORY	A	B	C	D
S-ILS 18R	CAT II RA 106/12 100 DA 844			
S-ILS 18R	CAT III RVR 06			

CATEGORY II & III ILS SPECIAL AIRCREW & AIRCRAFT CERTIFICATION REQUIRED