

EC-1, 27 NOV 2025 to 25 DEC 2025

DEPARTURE ROUTE DESCRIPTION

TAKEOFF RUNWAY 15: Climb on heading 148° or as assigned by ATC, thence...
TAKEOFF RUNWAY 33: Climb on heading 328° to 1800 then as assigned by ATC, thence....

....for RADAR vectors to JWELS, then on track 218° to SNDRS, then on (transition). Maintain ATC assigned altitude, expect filed altitude 10 minutes after departure.

BGHR T TRANSITION (SNDRS3.BGHR T):
TORR T TRANSITION (SNDRS3.TORR T):

NOTE: Turbojet departures at/above 10000, maintain 280K until advised by ATC.

NOTE: TORR Transition: For use by KIND and KCVG area arrivals only and flights filed at or below FL220, or as assigned by ATC.

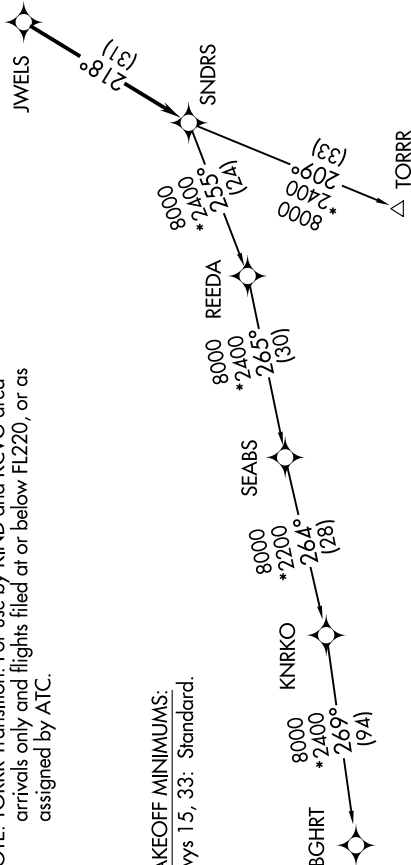
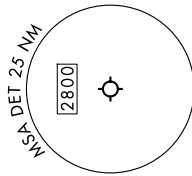
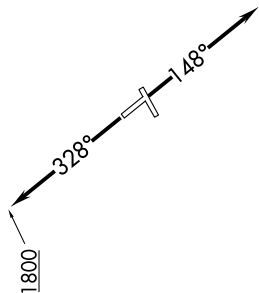
TAKEOFF MINIMUMS:
Rwys 15, 33: Standard.

TOP ALTITUDE:
ASSIGNED BY ATC

RNAV-1 DME/DME/IRU or GPS.

RADAR required.

DETROIT DEP CON
134.3 284.0
ATIS
124.875
GND CON
121.85
DETROIT CITY TOWER
121.3 257.8



NOTE: Chart not to scale.

EC-1, 27 NOV 2025 to 25 DEC 2025