

WAAS CH 69220 W13A	APP CRS 133°	Rwy Ldg TDZE Apt Elev	2623 836 836
--	------------------------	-----------------------------	---

RNAV (GPS) RWY 13

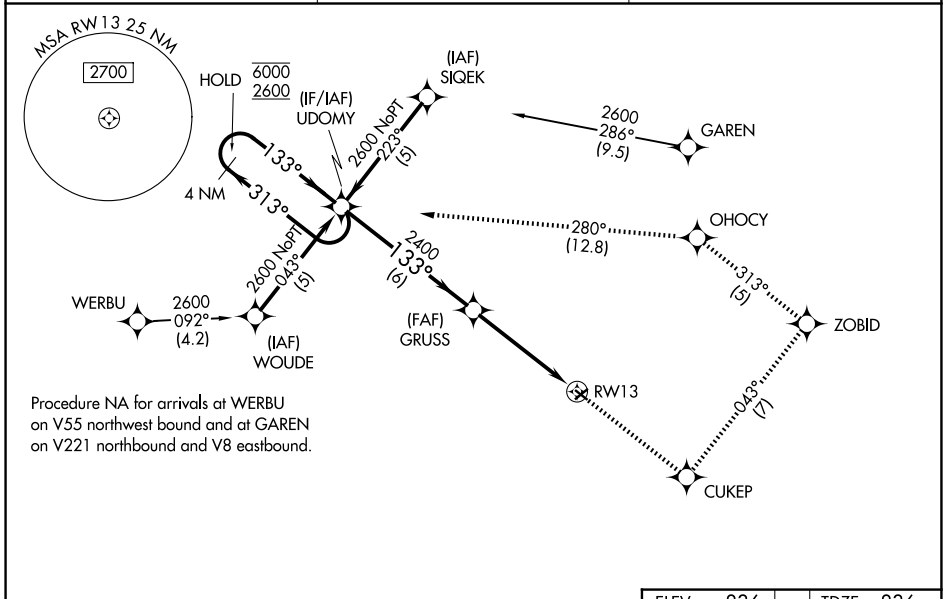
SMITH FLD (SMD)

RNP APCH.

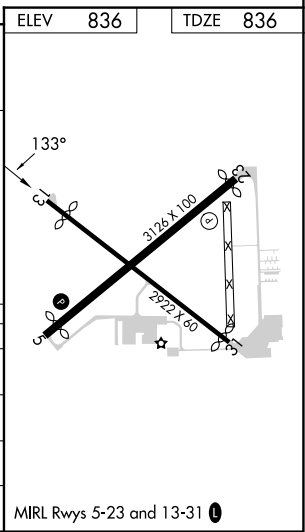
Procedure NA at night. Rwy 13 helicopter visibility reduction below 1 SM NA.
 For uncompensated Baro-VNAV systems, LNAV/VNAV NA below -16°C or above 54°C. When local altimeter setting not received, use Fort Wayne Intl altimeter setting:
 -21°C increase LPV DA to 1162 feet; LNAV/VNAV DA to 1435 feet; increase all MDA 40 feet and LNAV Cat C visibility ¼ SM. Baro-VNAV NA when using Fort Wayne Intl altimeter setting.

MISSED APPROACH: Climb to 2600 direct CUKEP and on track 043° to ZOBID and on track 313° to OHOCY and on track 280° to UDOMY and hold.

AWOS-3 124.55	FORT WAYNE APP CON 127.2 284.6	UNICOM 122.8 (CTAF)
-------------------------	--	-------------------------------



	2600	CUKEP	ZOBID	OHOCY	UDOMY
	↑	✧	✧	✧	✧
		tr 043°	tr 313°	tr 280°	
4 NM Holding Pattern	UDOMY				
6000 ← 313°	→ 133°				
2600	133°				
GP 3.00°	2400				
TCH 40	6 NM				
	GRUSS 2400			RWY 13	
				4.7 NM	
CATEGORY	A	B	C	D	
LPV DA	1135-1		299 (300-1)	NA	
LNAV/VNAV DA	1408-2		572 (600-2)	NA	
LNAV MDA	1340-1	504 (600-1)		1340-1½	504 (600-1½)
CIRCLING	1400-1	564 (600-1)		1940-3	1104 (1200-3)



EC-2, 27 NOV 2025 to 25 DEC 2025

EC-2, 27 NOV 2025 to 25 DEC 2025