

WAAS CH 48904 W10A	APP CRS 093°	Rwy Ldg 12246 TDZE 672 Apt Elev 680
--	------------------------	--

RNAV (GPS) RWY 10L

CHICAGO O'HARE INTL (ORD)

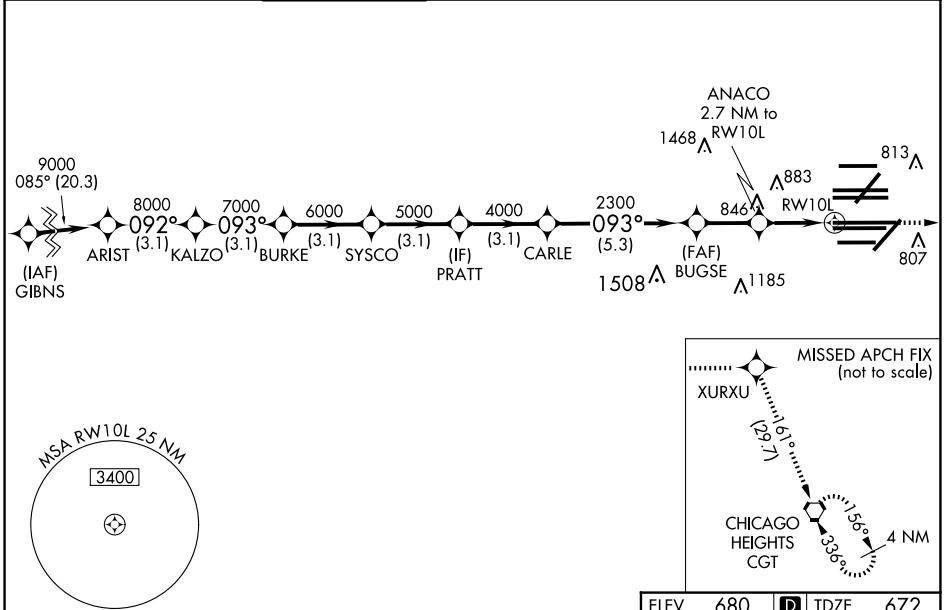
RADAR required for procedure entry: RNP APCH.

▼ For uncompensated Baro-VNAV systems, LNAV/VNAV NA below -19°C or above 54°C. Simultaneous approach authorized. LNAV procedure NA during simultaneous operations. Use of FD or AP providing RNAV track guidance required during simultaneous operations.



MISSED APPROACH: Climb to 4000 direct XURXU and on track 161° to CGT VORTAC and hold.

D-ATIS 135.4 282.225	CHICAGO APP CON 119.0 292.125	O'HARE TOWER 132.7 348.0	GND CON 124.125 (TWR NORTH) 118.05 (TWR SOUTH) 226.675 (ALL TWRs)	(TWR CENTER) 121.75 (OBND) 121.9 (IBND)	CLNC DEL 121.6	CPDLC
--	---	------------------------------------	---	---	--------------------------	-------



EC-3, 27 NOV 2025 to 25 DEC 2025

EC-3, 27 NOV 2025 to 25 DEC 2025

VGSi and RNAV glidepath not coincident (VGSi Angle 3.00/TCH 74).		4000	XURXU	tr 161°	CGT
ARIST 9000 092°		KALZO 8000 093°	BURKE 7000	SYSCO 6000	PRATT 5000
GP 3.00° TCH 56		3.1 NM	3.1 NM	3.1 NM	3.1 NM
3.1 NM		5.3 NM	-2.2 NM	1.5	1.2
CATEGORY	A	B	C	D	
LPV DA	872/18		200 (200-½)		
LNAV/VNAV DA	1062/35		390 (400-¾)		
LNAV MDA	1120/24	448 (500-½)	1120/45	448 (500-¾)	

