

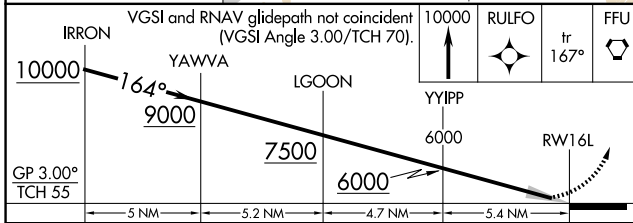
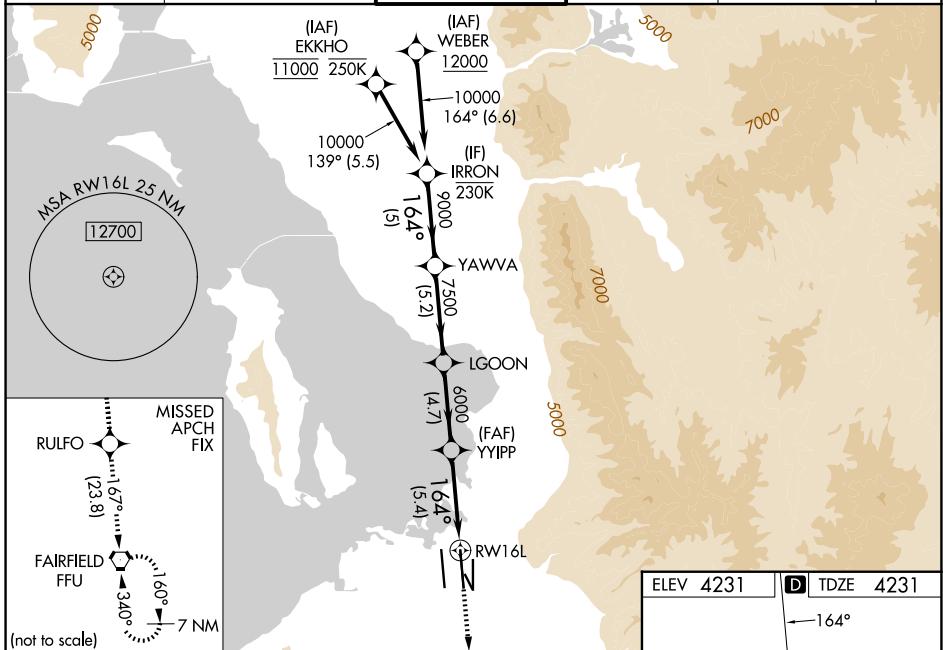
APP CRS <b>164°</b>	Rwy Ldg <b>12002</b>
	TDZE <b>4231</b>
	Apt Elev <b>4231</b>

# RNAV (RNP) Z RWY 16L

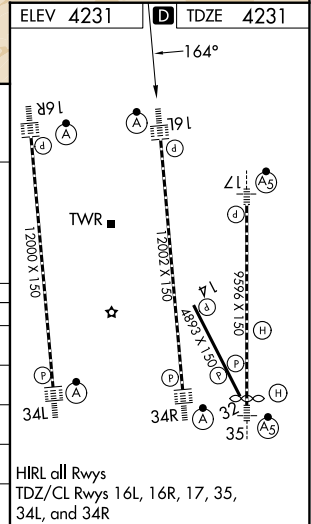
SALT LAKE CITY INTL (SLC)

<b>RNP AR APCH - GPS.</b> ▼ For uncompensated Baro-VNAV systems, procedure NA below -10°C or above 54°C. Simultaneous approach authorized. For inop ALS, increase RNP 0.16 all Cats visibility RVR to 5500, increase RNP 0.16 (323) all Cats visibility to RVR 4500 and increase RNP 0.30 all Cats visibility to RVR 5500.		ALSF-2 	MISSED APPROACH: Climb to 10000 direct RULFO and on track 167° to FFU VORTAC and hold. * Missed approach requires minimum climb of 323 feet per NM to 4740. # Missed approach requires minimum climb of 256 feet per NM to 4760.
---	--	------------	--

D-ATIS <b>124.75 125.625</b>	SALT LAKE CITY APP CON <b>125.7 284.6</b>	SALT LAKE CITY TOWER <b>119.05 257.8</b>	GND CON <b>123.775 348.6</b>	CLNC DEL <b>127.3 379.975</b>	CPDLC
---------------------------------	--	---	---------------------------------	----------------------------------	-------



CATEGORY	A	B	C	D
RNP 0.16 DA*	4516/24 285 (300-½)			NA
RNP 0.30 DA#	4565/26 334 (400-½)			
RNP 0.16 DA	4573/30 342 (400-¾)			NA
RNP 0.30 DA	4592/35 361 (400-¾)			



**AUTHORIZATION REQUIRED**

HIRL all Rwys  
TDZ/CL Rwys 16L, 16R, 17, 35, 34L, and 34R

SW-4, 27 NOV 2025 to 25 DEC 2025

SW-4, 27 NOV 2025 to 25 DEC 2025