

WAAS CH 61010 W16B	APP CRS 164°	Rwy Idg 9426 TDZE 430 Apt Elev 433
--	------------------------	---

RNAV (GPS) Y RWY 16C

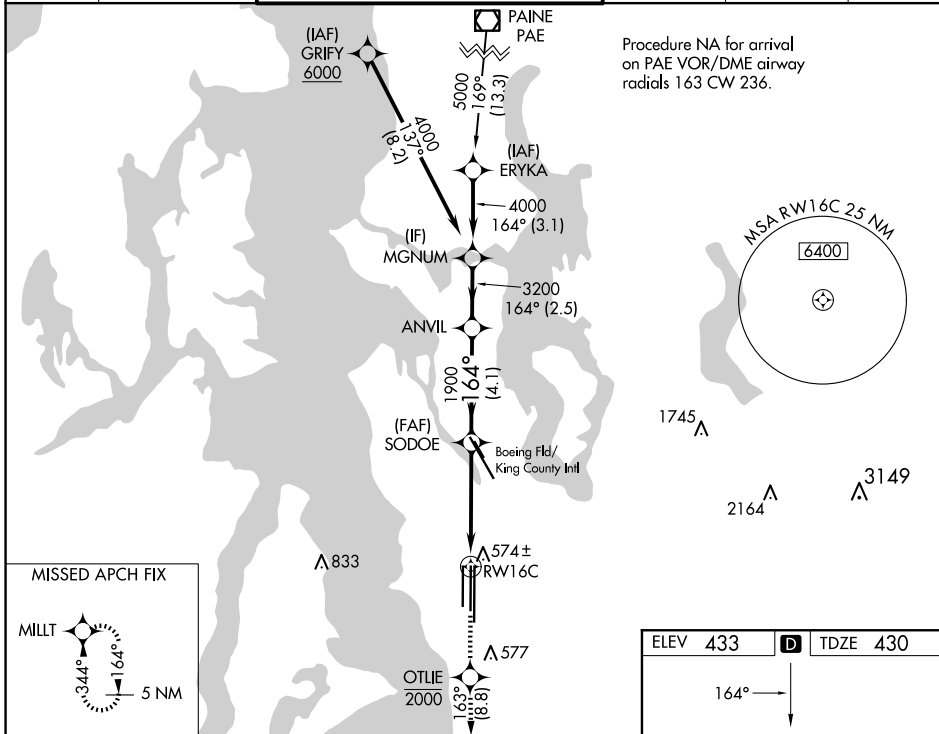
SEATTLE-TACOMA INTL (SEA)

▼ For uncompensated Baro-VNAV systems, LNAV/VNAV NA below -6°C (22°F) or above 54°C (130°F). DME/DME RNP-0.3 NA. For inop ALS, increase LNAV Cats C/D visibility to 1½. See additional requirements on adjacent information page.

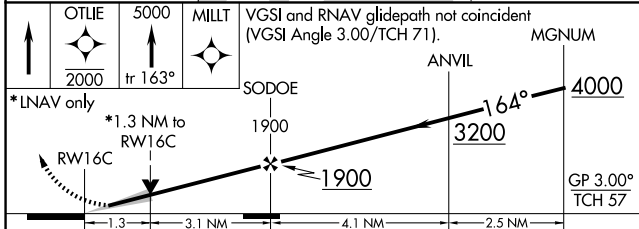
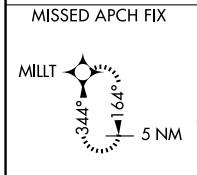
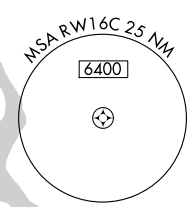


MISSED APPROACH: Climb direct OTLIE to cross OTLIE at or below 2000, then climb to 5000 on track 163° to MILLT and hold, continue climb-in-hold to 5000.

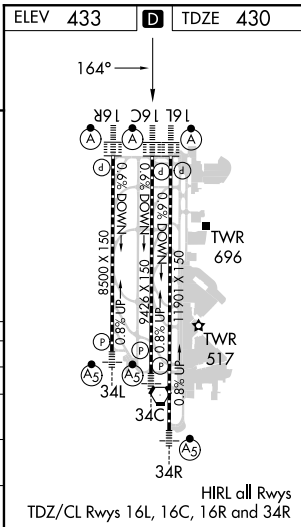
D-ATIS 118.0	SEATTLE APP CON 133.65 273.45	SEATTLE TOWER 119.9 239.3 (Rwys 16L, 16C, 34C, 34R) 120.95 239.3 (Rwys 16R, 34L)	GND CON 121.7	CLNC DEL 128.0	CPDLC
------------------------	---	--	-------------------------	--------------------------	-------



Procedure NA for arrival on PAE VOR/DME airway radials 163 CW 236.



CATEGORY	A	B	C	D
LPV DA		630/18	200 (200-½)	
LNAV/VNAV DA		840/44	410 (500-¾)	
LNAV MDA	920/24	490 (500-½)	920/50	490 (500-1)
CIRCLING	1000-1	567 (600-1)	1000-1½ 567 (600-1½)	1000-2 567 (600-2)



NW-1, 27 NOV 2025 to 25 DEC 2025

NW-1, 27 NOV 2025 to 25 DEC 2025