

LOC/DME I-EEI <b>110.35</b> Chan <b>40</b> (Y)	APP CRS <b>006°</b>	Rwy Ldg <b>10000</b> TDZE <b>896</b> Apt Elev <b>896</b>
--	------------------------	--

# ILS or LOC RWY 36R

CINCINNATI/NORTHERN KENTUCKY INTL (CVG)

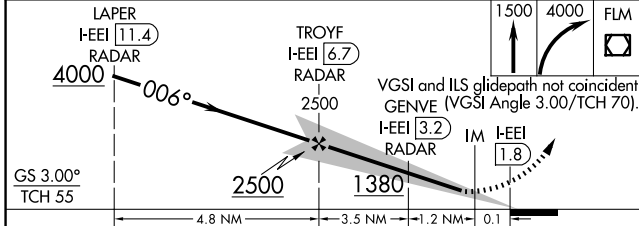
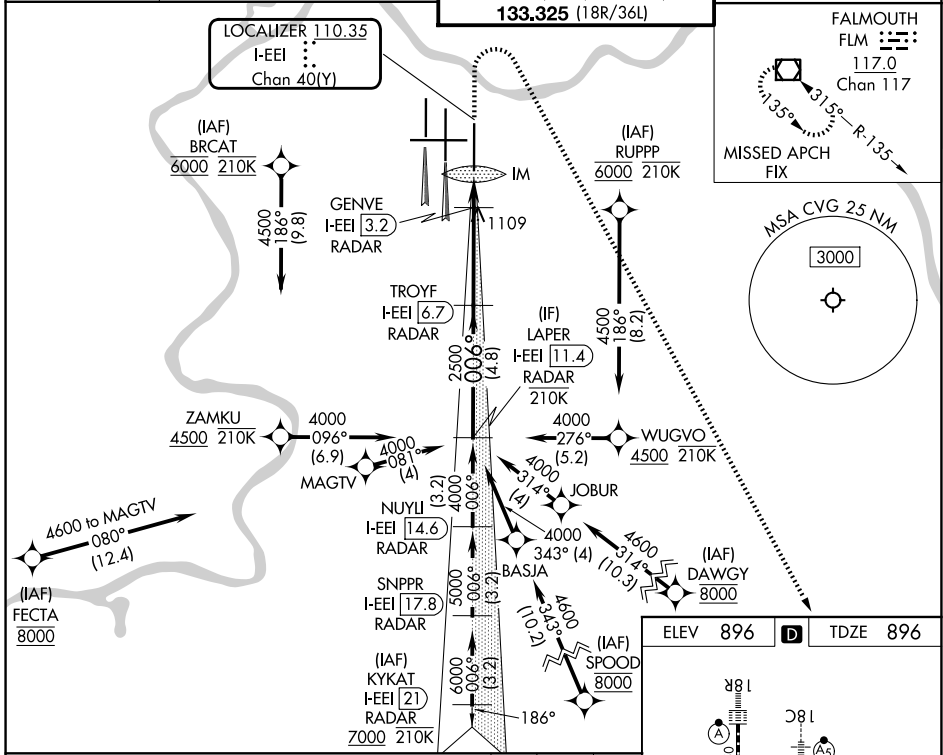
RNP APCH - GPS. From BRCAT or RUPPP or FECTA or SPOOD or DAWGY.  
DME or RADAR required. RADAR required for procedure entry at KYKAT.

Simultaneous approach authorized.  
For inop ALS, increase S-LOC 36R Cat C and D visibility to 1 3/8 SM.

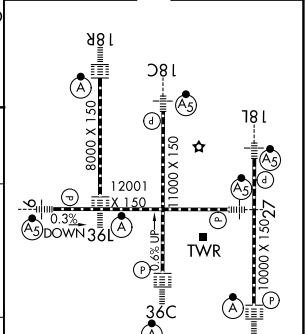
ALS F-2

MISSED APPROACH: Climb to 1500 then climbing right turn to 4000 direct FLM VOR/DME and hold.

D-ATIS <b>134.375</b>	CINCINNATI APP CON <b>119.7 363.15</b> (090°-269°) <b>123.875 363.15</b> (270°-089°)	CINCINNATI TOWER <b>118.975 360.85</b> (18L/36R) <b>118.3</b> (9/27, 18C/36C) <b>133.325</b> (18R/36L)	GND CON <b>121.7</b>
--------------------------	--	---	-------------------------



ELEV 896	D	TDZE 896
----------	---	----------



CATEGORY	A	B	C	D
S-ILS 36R	1096/18 200 (200-1/2)			
S-LOC 36R	1360/24	464 (500-1/2)	1360/50	464 (500-1)
CIRCLING	1460-1	564 (600-1)	1560-1 3/4 664 (700-1 3/4)	1560-2 664 (700-2)

HIRL all Rwys  
TDZ/CL all Rwys except 27  
FAF to MAP 4.9 NM

Knots	60	90	120	150	180
Min:Sec	4:54	3:16	2:27	1:58	1:38

SE-1, 27 NOV 2025 to 25 DEC 2025

SE-1, 27 NOV 2025 to 25 DEC 2025