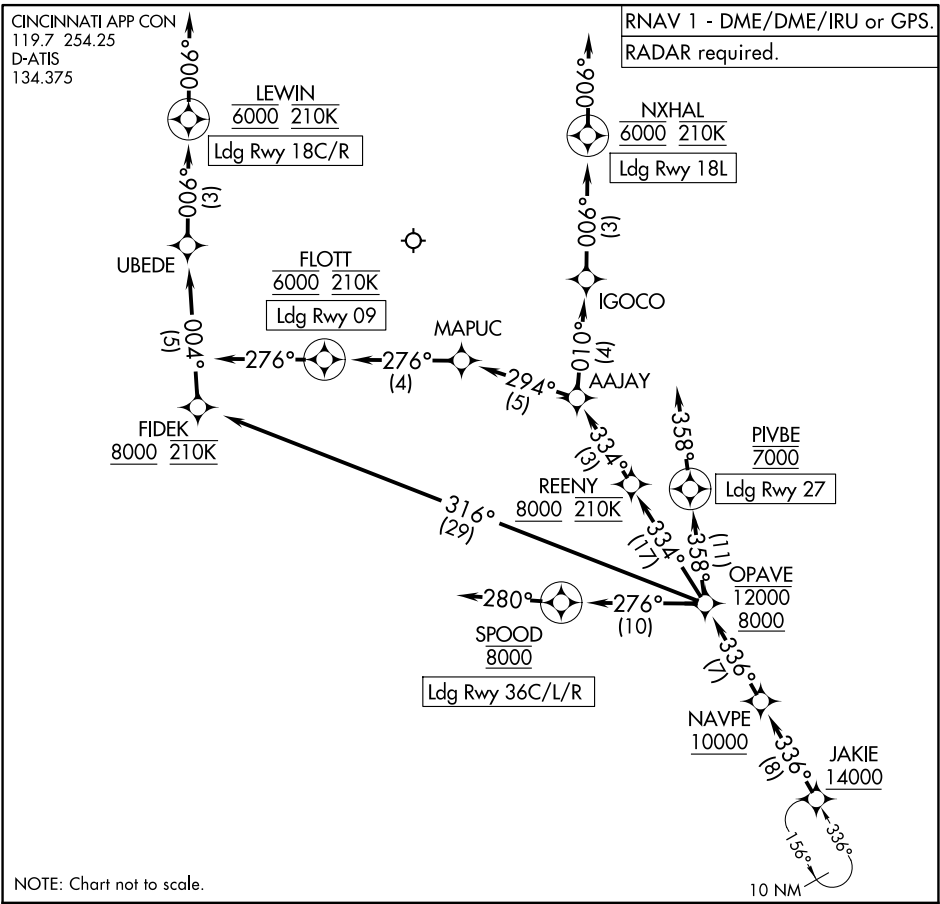


CINCINNATI/NORTHERN KENTUCKY INTL (CVG)  
JAKIE SIX ARRIVAL (RNAV) Arrival Routes

COVINGTON, KENTUCKY



NOTE: Chart not to scale.

ARRIVAL ROUTE DESCRIPTION

From JAKIE on track 336° to cross NAVPE at or above 10000, then on track 336° to cross OPAVE between 8000 and 12000.

**LANDING RUNWAY 9:** From OPAVE on track 334° to cross REENY at or above 8000 and at 210K, then on track 334° to AAJAY, then on track 294° to MAPUC, then on track 276° to cross FLOTT at 6000 and at 210K, then on track 276°. Expect RADAR vectors to final approach course.

**LANDING RUNWAYS 18C/R:** From OPAVE on track 316° to cross FIDEK at or above 8000 and at 210K, then on track 004° to UBEDE, then on track 006° to cross LEWIN at 6000 and at 210K, then on track 006°. Expect RADAR vectors to final approach course.

**LANDING RUNWAY 18L:** From OPAVE on track 334° to cross REENY at or above 8000 and at 210K, then on track 334° to AAJAY, then on track 010° to IGOCO, then on track 006° to cross NXHAL at 6000 and at 210K, then on track 006°. Expect RADAR vectors to final approach course.

**LANDING RUNWAY 27:** From OPAVE on track 358° to cross PIVBE at 7000, then on track 358°. Expect RADAR vectors to final approach course.

**LANDING RUNWAYS 36L/C/R:** From OPAVE on track 276° to cross SPOOD at 8000, then on track 280°. Expect RADAR vectors to final approach course.