

ACK VOR/DME 116.2 Chan 109	APP CRS 240°	Rwy Ldg 6303 TDZE 48 Apt Elev 48
--	------------------------	---

VOR RWY 24

NANTUCKET MEML (ACK)

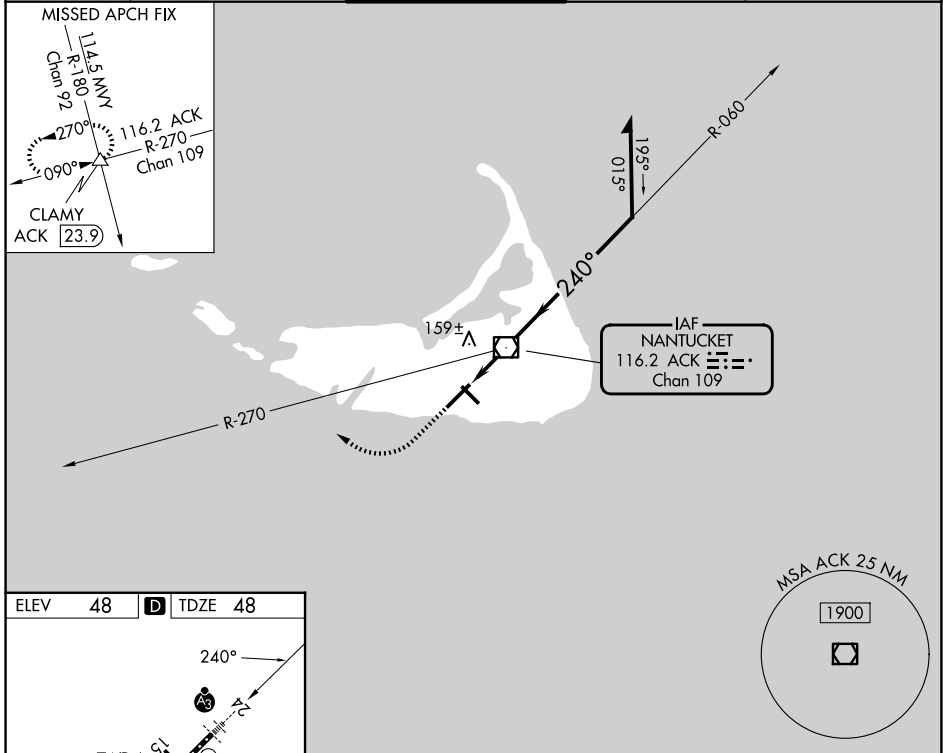
⚠ When local altimeter setting not received, use HYA altimeter setting and increase all MDAs 80 feet and S-24 visibility Cat C and D to RVR 5000 and increase Circling visibility Cats C and D ¼ SM. For inoperative SSALR: for inop ALS, increase S-24 Cats C and D visibility to RVR 6000. For inop ALS when using HYA altimeter setting, increase S-24 Cats C and D visibility to 1¾.

SSALR

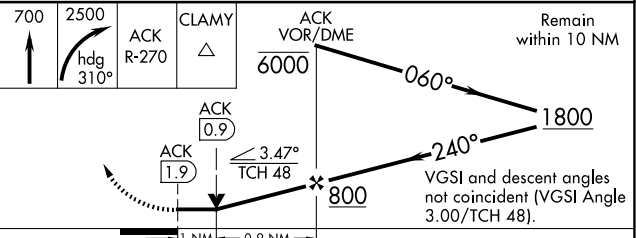


MISSED APPROACH: Climb to 700 then climbing right turn to 2500 via heading 310° and ACK VOR/DME R-270 to CLAMY INT/ACK 23.9 DME and hold.

ATIS 127.5	BOSTON APP CON 126.1 318.1	NANTUCKET TOWER ★ 118.3 (CTAF) 0	GND CON 132.5	UNICOM 122.95
----------------------	--------------------------------------	--	-------------------------	-------------------------



ELEV 48	D	TDZE 48
TDZL/RCLS Rwy 24 REIL Rwys 15 and 33 MIRL Rwy 15-33 HIRL Rwy 6-24 0		
FAF to MAP 1.9 NM		
Knots	60	90 120 150 180
Min:Sec	1:54	1:16 0:57 0:46 0:38



CATEGORY	A	B	C	D
S-24	440/24	393 (400-½)	440/40	393 (400-¾)
CIRCLING	480-1 433 (500-1)	500-1 453 (500-1)	720-2 673 (700-2)	720-2¼ 673 (700-2¼)

NE-1, 27 NOV 2025 to 25 DEC 2025

NE-1, 27 NOV 2025 to 25 DEC 2025