

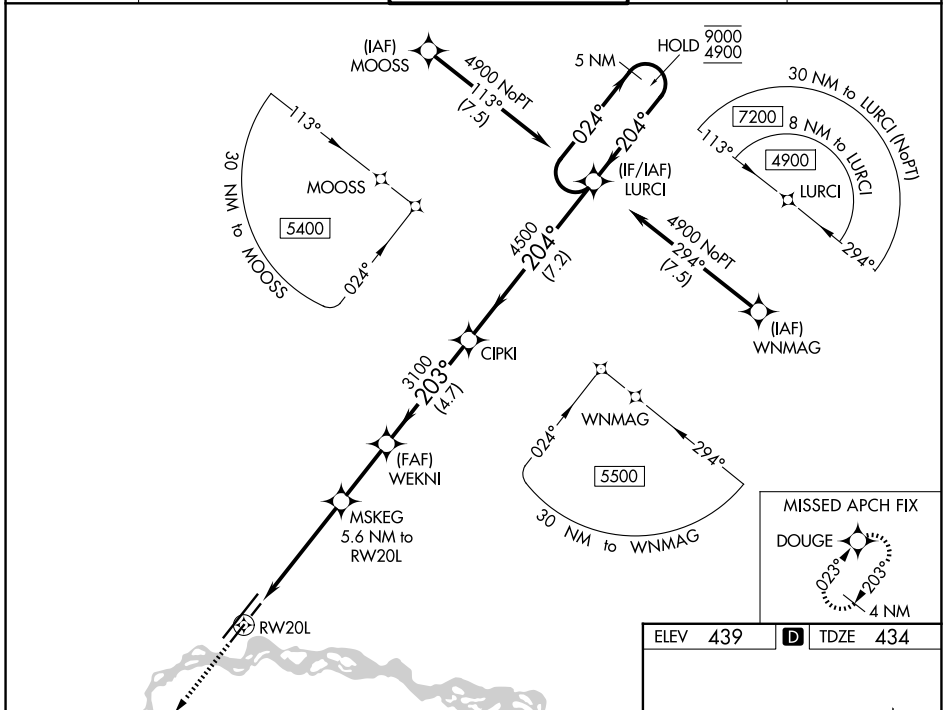
WAAS CH <b>93812</b> <b>W20A</b>	APP CRS <b>203°</b>	Rwy Ldg TDZE Apt Elev	<b>4510</b> <b>434</b> <b>439</b>
--	------------------------	-----------------------------	---

# RNAV (GPS) RWY 20L

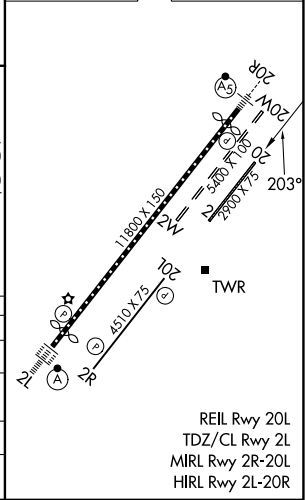
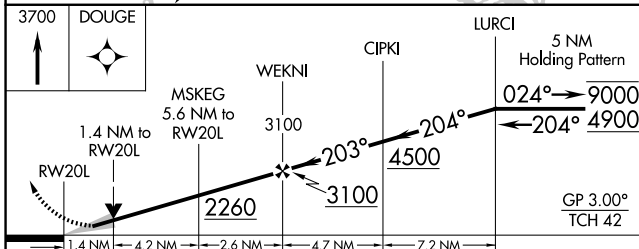
FAIRBANKS INTL (FAI) (PAFA)

RNP APCH-GPS.		MISSED APPROACH: Climb to 3700 direct DOUGE and hold, continue climb-in-hold to 3700.	
<p><b>7</b> Circling NA west of Rwy 2L-20R. For uncompensated Baro-VNAV systems, LNAV/VNAV NA below -20°C or above 54°C. Circling NA to Rwys 2W/20W and 2/20.</p> <p><b>8</b> -29°C</p>			

ATIS <b>124.4</b>	FAIRBANKS APP CON <b>125.35 363.2</b>	FAIRBANKS TOWER <b>118.3 257.8</b>	GND CON <b>121.9</b>	CLNC DEL <b>127.6</b>
----------------------	--	---------------------------------------	-------------------------	--------------------------



ELEV 439	<b>D</b> TDZE 434
----------	-------------------



CATEGORY	A	B	C	D
LPV DA		684- <sup>3</sup> / <sub>4</sub>	250 (300- <sup>3</sup> / <sub>4</sub> )	
LNAV/VNAV DA		701- <sup>7</sup> / <sub>8</sub>	267 (300- <sup>7</sup> / <sub>8</sub> )	
LNAV MDA	920-1	486 (500-1)	920-1 <sup>3</sup> / <sub>8</sub>	486 (500-1 <sup>3</sup> / <sub>8</sub> )
CIRCLING	920-1	481 (500-1)	920-1 <sup>1</sup> / <sub>2</sub>	1000-2 561 (600-2)

AK, 27 NOV 2025 to 22 JAN 2026

AK, 27 NOV 2025 to 22 JAN 2026