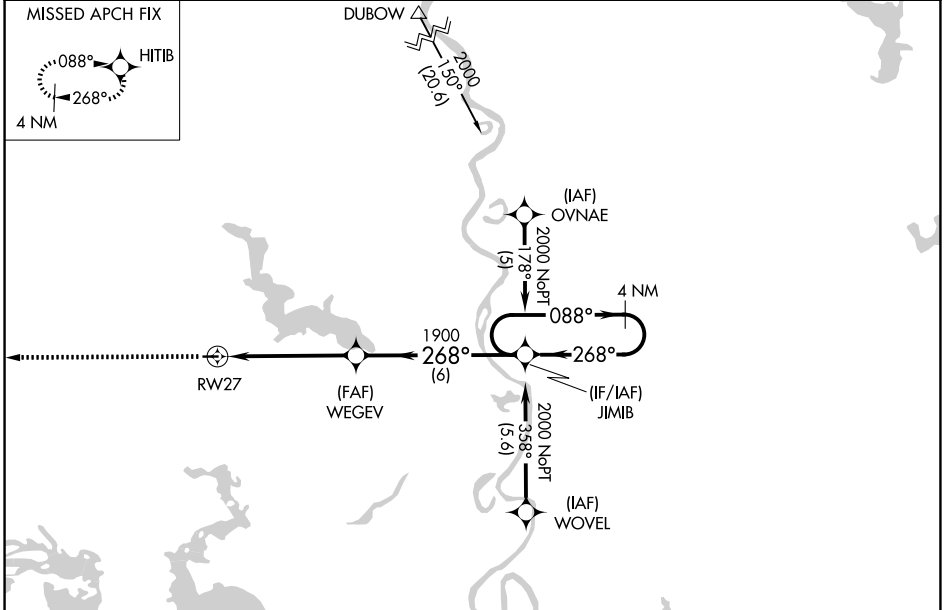


APP CRS	Rwy Ldg	<b>2998</b>
<b>268°</b>	TDZE	<b>260</b>
	Apr Elev	<b>260</b>

# RNAV (GPS) RWY 27

VIVIAN (3F4)

RNP APCH.		MISSED APPROACH: Climb to 2000 direct HITIB and hold.
▼	Use Shreveport Rgnl altimeter setting; when not received, use Shreveport Downtown altimeter setting. Procedure NA at night. Rwy 27 helicopter visibility reduction below 1 SM NA.	
SHREVEPORT APP CON <b>119.9 335.55</b>		UNICOM <b>122.8 (CTAF) 0</b>
GCO <b>135.075</b>		



ELEV 260	TDZE 260
----------	----------

0.4% UP

2998 X 75

268°

2000

HITIB

3.04% TCH 40

1900

5 NM

6 NM

MIRL Rwy 9-27 1

REIL Rwy 9 1

REIL Rwy 27

MSA RW 27 25 NM		3100	
4 NM Holding Pattern		JIMIB	
WEGEV		2000	
RWY 27		088°	
268°		268°	
CATEGORY	A	B	C
LNAV MDA	860-1	600 (600-1)	860-1¾ 600 (600-1¾)
			NA

SC-4, 27 NOV 2025 to 25 DEC 2025

SC-4, 27 NOV 2025 to 25 DEC 2025