

LOC/DME I-PPZ 111.75 Chan 54 (Y)	APP CRS 176°	Rwy Ldg 8500 TDZE 545 Apt Elev 607
--	------------------------	---

ILS RWY 17L (SA CAT I)

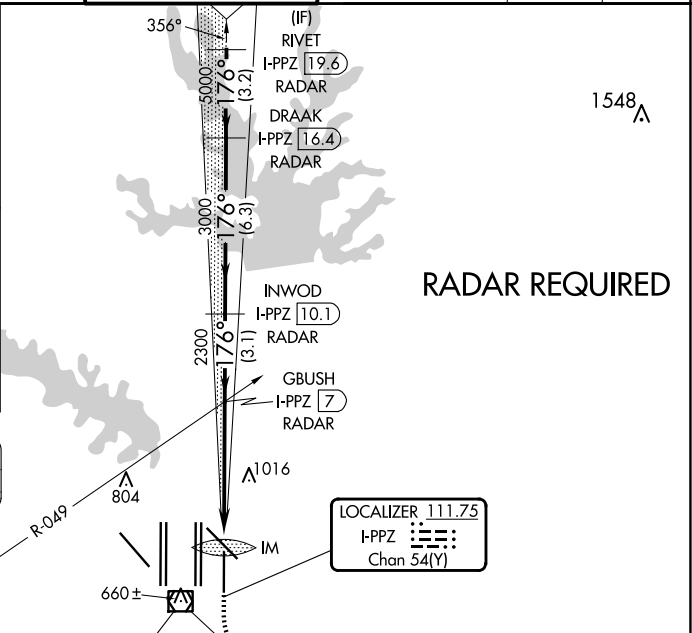
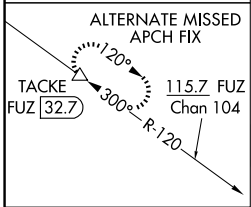
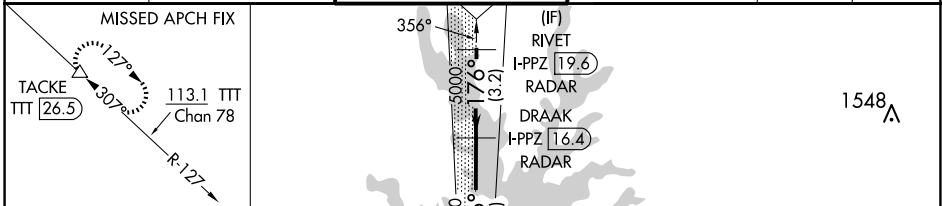
DALLAS-FORT WORTH INTL (DFW)

Simultaneous approach authorized with Rwy 17C/R and Rwy 18L/R. DME required. Requires specific OPSPEC, MSPEC, or LOA approval and use of HUD to DA.

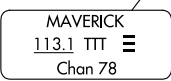
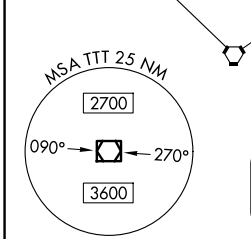
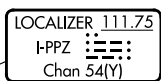
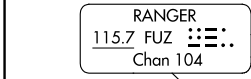
ALSF-2

MISSED APPROACH: Climb to 1020 then climbing left turn to 3000 on heading 151° and TTT VOR/DME R-127 to TACKE/TTT 26.5 DME and hold.

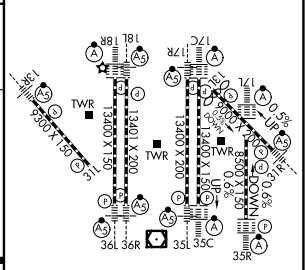
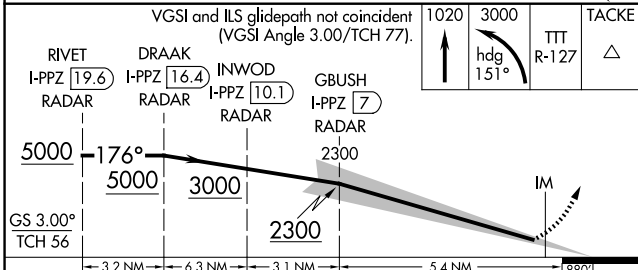
D-ATIS ARR 123.775 DEP 135.925	LONE STAR APP CON 119.4	DFW TOWER 126.55 127.5 EAST 124.15 134.9 WEST	GND CON 121.65 121.8 EAST 121.85 WEST	CLNC DEL 128.25	CPDLC
--	-----------------------------------	---	---	---------------------------	-------



RADAR REQUIRED



ELEV 607	D	TDZE 545
----------	---	----------



CATEGORY	A	B	C	D
S-ILS 17L	RA 165/14 150 DA 695			

SA CATEGORY I ILS - SPECIAL AIRCREW & AIRCRAFT CERTIFICATION REQUIRED

HIRL all Rwys
REL Rwy 13L and 31L
TDZ/CL all Rwy except 13L and 31L

SC-2, 27 NOV 2025 to 25 DEC 2025

SC-2, 27 NOV 2025 to 25 DEC 2025