

FORT INDIANTOWN GAP, PENNSYLVANIA

COPTER ILS or LOC RWY 25

LOC/DME I-MUI 111.75 Chan 54(Y)	APCH CRS 250°	Rwy Idg THRE 480 Arprt Elev 487
---	-------------------------	---

[USA]

MUIR AHP (FORT INDIANTOWN GAP) (KMUI)

DME required

- ▼ Use KMDT altimeter when local altimeter not available. When RAV VOR out of service, RNAV required to BAARN.
- ▲ Non-RNAV equipped aircraft expect RADAR vectors.

MISSED APPROACH: Climb to 1700 then climbing left turn to 3000 on RAV VORTAC R-193 to BAARN and hold, continue climb-in-hold to 3000.

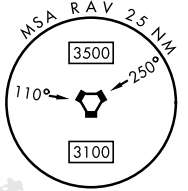
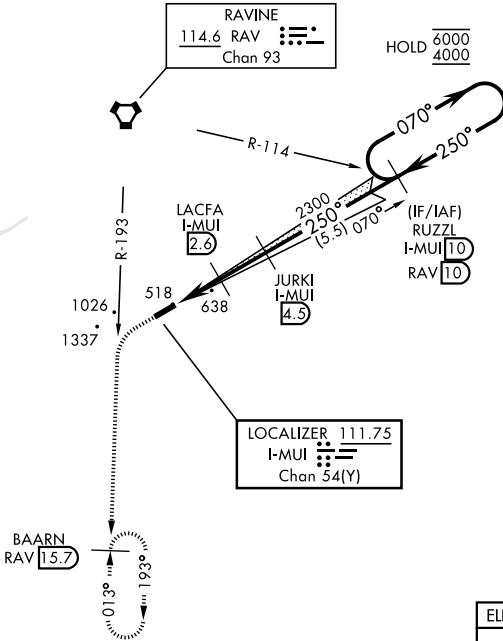
ASOS 124.175	HARRISBURG APP/DEP CON 118.25 269.45	TOWER ★ 126.2 (CTAF) 290.325	GND CON 135.675 269.525
------------------------	--	--	-----------------------------------

Knots	60	120	180	240	300	360
V/V(fpm)	435	870	1305	1740	2175	2610
Min climb of 435 ft/NM to 1800-Controlling Obstacle 1337'						

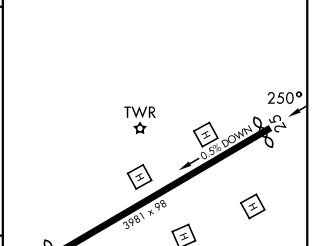
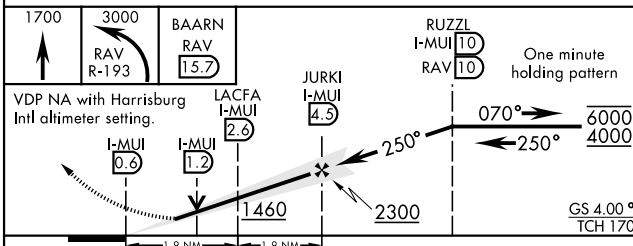
NOT FOR CIVIL USE

Limit all segments to 90 KIAS.

NE-4, 27 NOV 2025 to 25 DEC 2025



ELEV	487	THRE	480
------	-----	------	-----



CATEGORY	COPTER		
S-ILS 25	821-1	334	(400-1)
S-LOC 25	900-1	413	(500-1)
KMDT (HARRISBURG INTL) ALTIMETER SETTING MINIMUMS			
S-ILS 25	885-1½	398	(400-1½)
S-LOC 25	980-1	493	(500-1)

MRL Rwy 07-25

FORT INDIANTOWN GAP, PENNSYLVANIA

40°26'N - 76°34'W MUIR AHP (FORT INDIANTOWN GAP) (KMUI)

Amtd 1 23JAN25

COPTER ILS or LOC RWY 25

NE-4, 27 NOV 2025 to 25 DEC 2025