

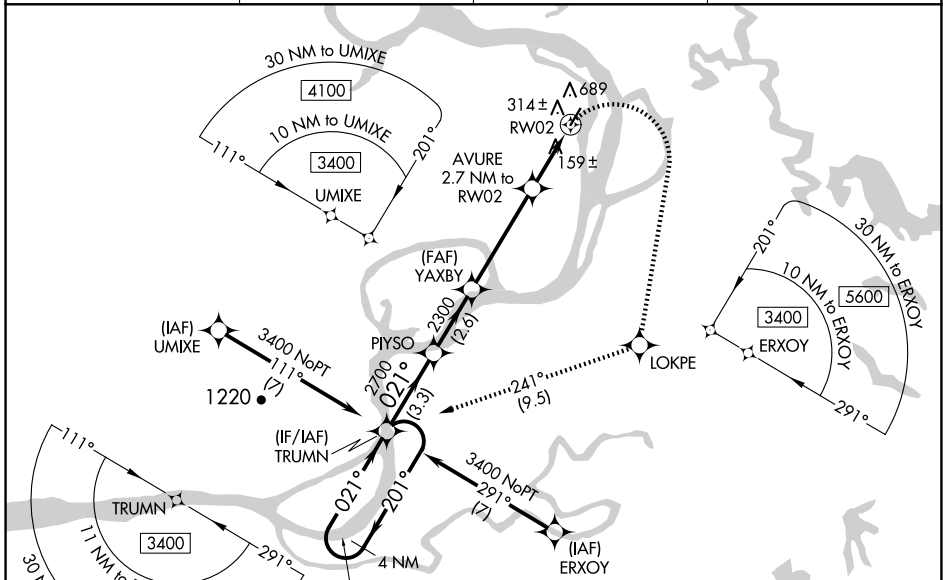
| | | |
|--|------------------------|---|
| WAAS CH 57947 W02A | APP CRS 021° | Rwy Idg 4000 TDZE 74 Apt Elev 75 |
|--|------------------------|---|

RNAV (GPS) RWY 2

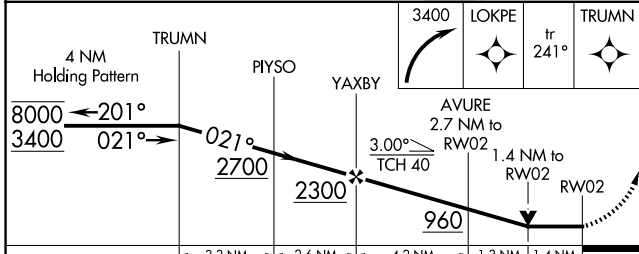
HOLY CROSS (HCA) (PAHC)

| | |
|--|--|
| RNP APCH - GPS. | MISSED APPROACH: Climbing right turn to 3400 direct LOKPE and on track 241° to TRUMN and hold, continue climb-in-hold to 3400. |
| <p>▼ Circling Rwy 20 NA at night. Circling NA west of Rwy 2-20. Rwy 2 helicopter visibility reduction below 3/4 SM NA. VDP NA when using Anvik altimeter setting.</p> <p>▲ When local altimeter setting not received, use Anvik altimeter setting and increase all MDAs 120 feet and LNAV visibility Cat B, C and D 1/2 SM, and LP visibility Cat C and D 3/8 SM, and Circling all visibilities 1/2 SM.</p> <p>☁ -28°C</p> | |

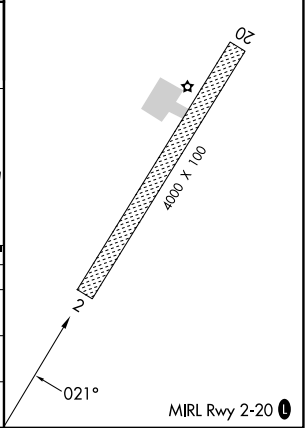
| | | | |
|---------------------------|--|------------------------------|----------------------|
| AWOS-3P 118.325 | ANCHORAGE CENTER 118.15 251.05 | KENAI RADIO 122.45 | CTAF 122.8 |
|---------------------------|--|------------------------------|----------------------|



| | |
|---------|---------|
| ELEV 75 | TDZE 74 |
|---------|---------|



| CATEGORY | A | B | C | D |
|----------|-------|-------------|-------------|-----------------|
| LP MDA | 560-1 | 486 (500-1) | 560-1 3/8 | 486 (500-1 3/8) |
| LNAV MDA | 800-1 | 726 (800-1) | 800-2 | 726 (800-2) |
| CIRCLING | 800-1 | 725 (800-1) | 800-2 | 800-2 1/4 |
| | | | 725 (800-2) | 725 (800-2 1/4) |



AK, 27 NOV 2025 to 22 JAN 2026

AK, 27 NOV 2025 to 22 JAN 2026