

LOC I-DQG <b>111.7</b>	APP CRS <b>003°</b>	Rwy Ldg <b>10000</b> TDZE <b>707</b> Apt Elev <b>748</b>
---------------------------	------------------------	--

# ILS or LOC RWY 36C

CHARLOTTE/DOUGLAS INTL (CLT)

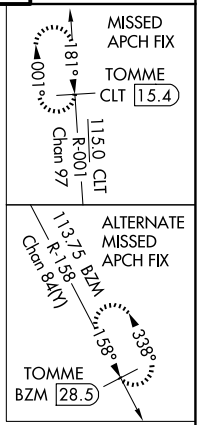
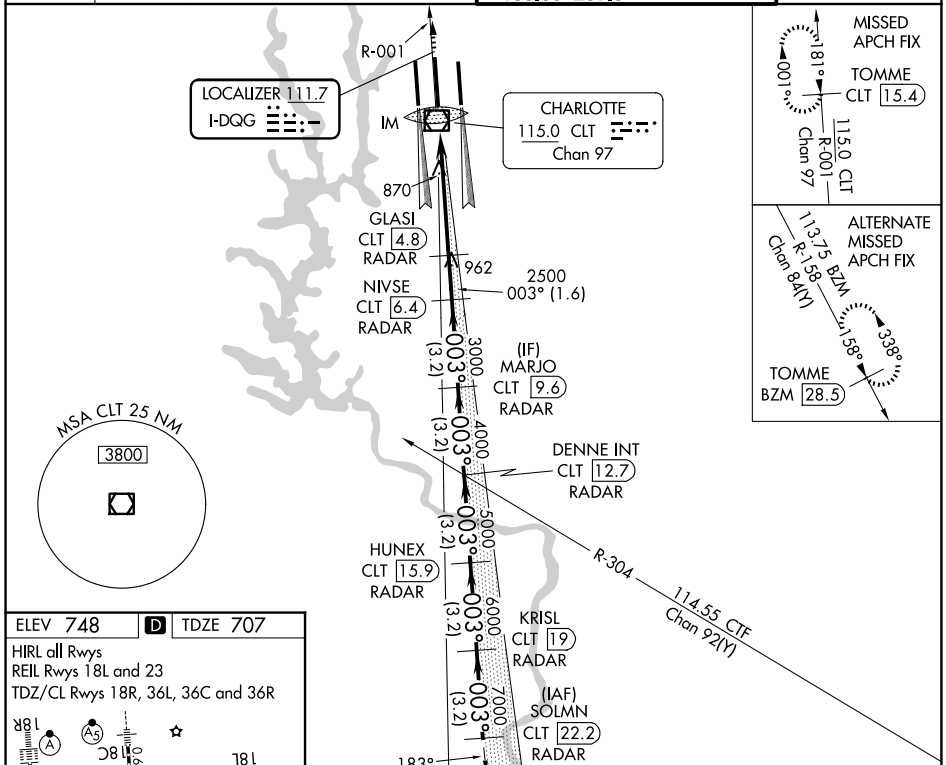
RADAR required for procedure entry. DME or RADAR required.

**⚠** Circling NA at night. Simultaneous approach authorized. DQG ILS LLZ Rwy 36C unusable for rollout guidance.

ALSF-2  
**A**

MISSED APPROACH: Climb to 3000 on CLT VOR/DME R-001 to TOMME/CLT 15.4 DME and hold.

D-ATIS <b>121.15</b>	CHARLOTTE APP CON <b>128.325</b> (001°-119°) <b>120.05</b> (120°-295°) <b>134.75</b> (296°-360°)	<b>257.2</b> (180°-359°) <b>307.8</b> (360°-179°)	CHARLOTTE TOWER <b>118.1</b> <b>257.8</b> (Rwys 18L-36R) <b>126.4</b> <b>257.8</b> (Rwy 18C-36C) <b>133.35</b> <b>257.8</b> (Rwy 18R-36L)	GND CON <b>121.8</b> <b>348.6</b> (W) <b>121.9</b> <b>348.6</b> (E)
-------------------------	---	--	--	---



ELEV 748	<b>D</b>	TDZE 707			
HIRL all Rwys REIL Rwys 18L and 23 TDZ/CL Rwys 18R, 36L, 36C and 36R					
FAF to MAP 5.4 NM					
Knots	60	90	120	150	180
Min:Sec	5:24	3:36	2:42	2:10	1:48

3000	CLT R-001	TOMME CLT 15.4	VGSi and ILS glidepath not coincident (VGSi Angle 3.00/TCH 72).		SOLMNN CLT 22.2
8000	GLASI CLT 4.8 RADAR	NIVSE CLT 6.4 RADAR	MARJO CLT 9.6 RADAR	DENNE INT CLT 12.7 RADAR	HUNEX CLT 19 RADAR
7000	IM	2500	3000	4000	5000
6000	0.2 NM	0.5 NM	1.6 NM	3.2 NM	3.2 NM
5000	3.2 NM	3.2 NM	3.2 NM	3.2 NM	3.2 NM
4000	3.2 NM	3.2 NM	3.2 NM	3.2 NM	3.2 NM
3000	3.2 NM	3.2 NM	3.2 NM	3.2 NM	3.2 NM
2500	3.2 NM	3.2 NM	3.2 NM	3.2 NM	3.2 NM
2000	3.2 NM	3.2 NM	3.2 NM	3.2 NM	3.2 NM
1500	3.2 NM	3.2 NM	3.2 NM	3.2 NM	3.2 NM
1000	3.2 NM	3.2 NM	3.2 NM	3.2 NM	3.2 NM
500	3.2 NM	3.2 NM	3.2 NM	3.2 NM	3.2 NM
0	3.2 NM	3.2 NM	3.2 NM	3.2 NM	3.2 NM
GS 3.00° TCH 57					
CATEGORY	A		B		C
S-ILS 36C	907/18		200 (200-1/2)		
S-LOC 36C	1120/24		413 (400-1/2)		
CIRCLING	1380-1	632 (700-1)	1500-2 1/4	752 (800-2 1/4)	1500-2 1/2
			752 (800-2 1/2)		

SE-2, 25 DEC 2025 to 22 JAN 2026

SE-2, 25 DEC 2025 to 22 JAN 2026