

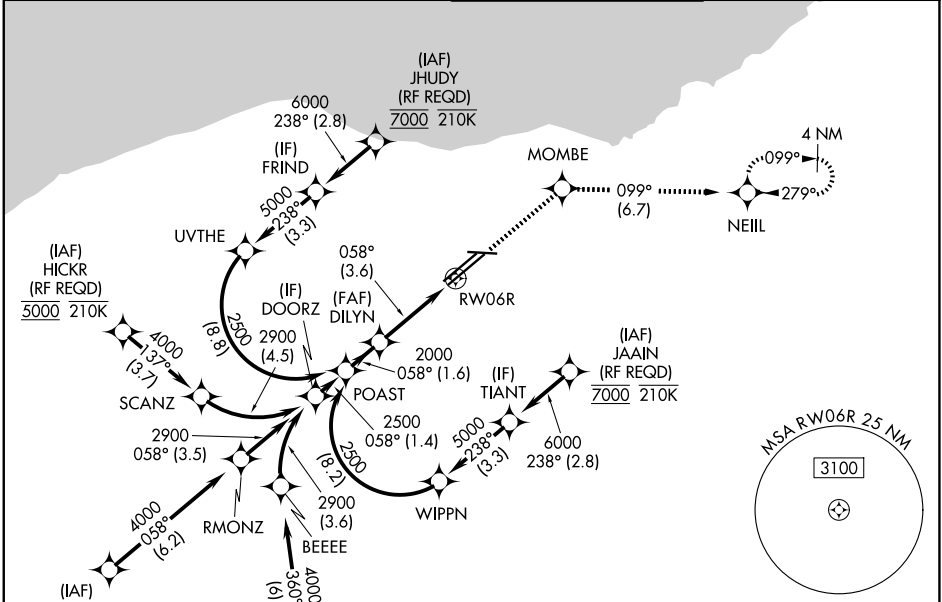
APP CRS	Rwy Ldg	8029
058°	TDZE	777
	Apt Elev	799

RNAV (RNP) Z RWY 6R

CLEVELAND-HOPKINS INTL (CLE)

RNP AR APCH.	MALSR	MISSED APPROACH: Climb to 3000 direct MOMB and on track 099° to NEILL and hold. *Missed approach requires minimum climb of 270 feet per NM to 1400.
For uncompensated Baro-VNAV systems, procedure NA below -18°C (0°F) or above 46°C (114°F). For inop ALS, increase RNP 0.15 all Cats visibility to RVR 5500.		

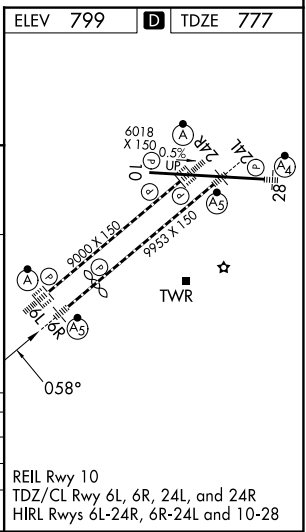
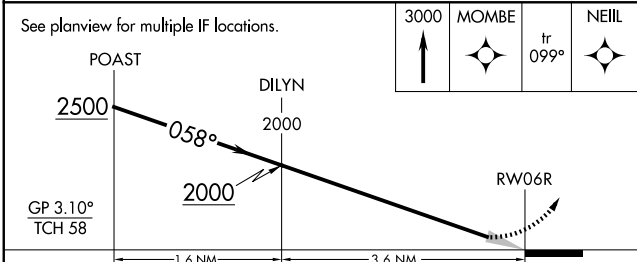
D-ATIS 127.85	CLEVELAND APP CON 126.55 346.325	CLEVELAND TOWER 124.5 273.45	GND CON 121.7 273.45
-------------------------	--	--	--------------------------------



EC-2, 25 DEC 2025 to 22 JAN 2026

EC-2, 25 DEC 2025 to 22 JAN 2026

ELEV 799	D TDZE 777
----------	-------------------



CATEGORY	A	B	C	D
RNP 0.15 DA*		1127/30	350 (400- ⁵ / ₈)	
RNP 0.30 DA		1229/45	452 (500- ⁷ / ₈)	

AUTHORIZATION REQUIRED

REIL Rwy 10
TDZ/CL Rwy 6L, 6R, 24L, and 24R
HIRL Rwy 6L-24R, 6R-24L and 10-28