

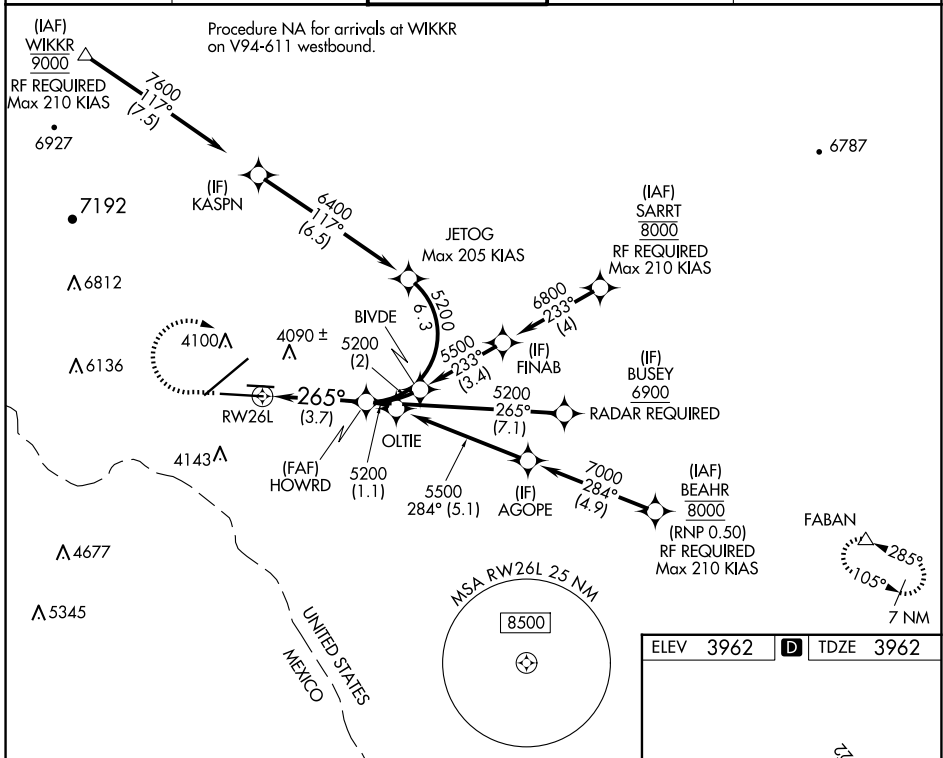
# RNAV (RNP) Z RWY 26L

EL PASO INTL (ELP)

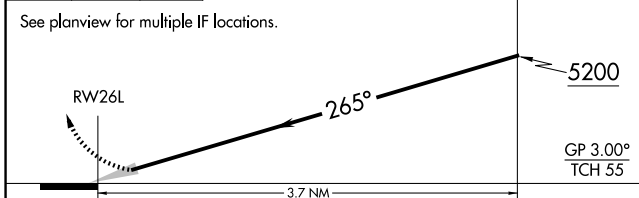
APP CRS <b>265°</b>	Rwy Ldg TDZE <b>9025</b> <b>3962</b>	Apt Elev <b>3962</b>
------------------------	--	-------------------------

ASR	For uncompensated Baro-VNAV systems, procedure NA below -8°C (18°F) or above 50°C (122°F). For inop MALSRS, increase RNP 0.30 visibility all Cats to 1 mile. GPS Required.	MALSRS 	MISSED APPROACH: Climb to 4400, then climbing right turn to 7500 direct FABAN and hold.
-----	--	------------	---

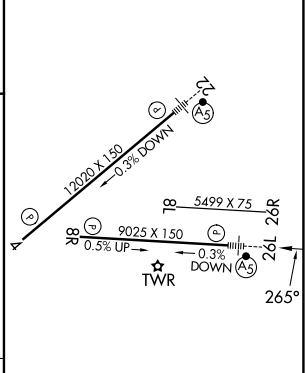
D-ATIS <b>120.0 254.3</b>	EL PASO APP CON <b>124.25 298.85</b>	EL PASO TOWER <b>118.3 239.275</b>	GND CON <b>121.9 348.6</b>	CLNC DEL <b>125.0 379.1</b>
------------------------------	---	---------------------------------------	-------------------------------	--------------------------------



4400	7500	FABAN	VGSI and glidepath not coincident (VGSI Angle 3.00/TCH 75).
------	------	-------	---



ELEV 3962	<b>D</b> TDZE 3962
-----------	--------------------



CATEGORY	A	B	C	D
RNP 0.30 DA		4275-1/2	313 (400-1/2)	
<b>AUTHORIZATION REQUIRED</b>				

MIRL Rwy 8L-26R  
 REIL Rwy 4 and 8R  
 HIRL Rwy 4-22 and 8R-26L

SC-3, 25 DEC 2025 to 22 JAN 2026

SC-3, 25 DEC 2025 to 22 JAN 2026