

APP CRS 071°	Rwy Ldg TDZE Apt Elev	9748 116 128
------------------------	-----------------------------	---

RNAV (RNP) Z RWY 6R

LOS ANGELES INTL (LAX)

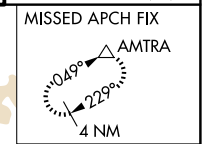
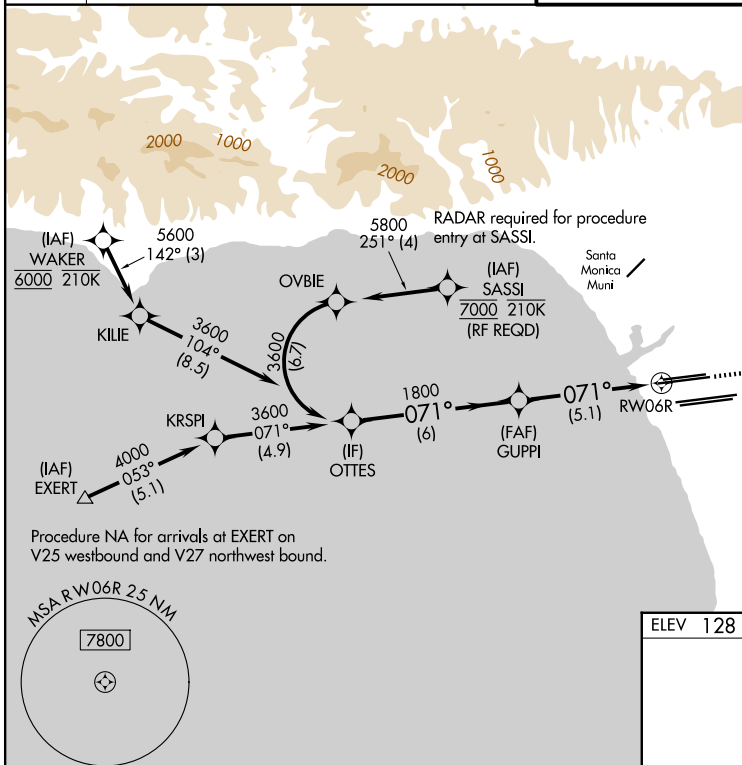
For uncompensated Baro-VNAV systems, procedure NA below 5°C (41°F) or above 54°C (130°F). GPS required. Simultaneous approach authorized. For inop ALS, increase RNP 0.30 all Cats visibility to RVR 6000.

MALSR
MISSED APPROACH: Climb to 3000 on track 071° to ZIMLO and on track 042° to AMTRA and hold.

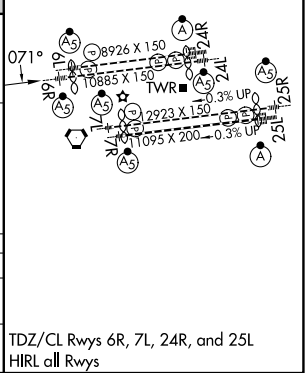
D-ATIS 133.8	SOCAL APP CON 124.3 363.2 (APCH from W) 124.9 269.0 (090°-224°) 124.5 235.975 (225°-044°) 128.5 360.7 (045°-089°)
------------------------	---

LOS ANGELES TOWER 133.9 239.3 (N) 120.95 379.1 (S)
--

GND CON 121.65 327.0 (N) 121.75 327.0 (S) 121.4 327.0 (W)



VGSi and RNAV glidepath not coincident (VGSi Angle 3.00/TCH 69).			
OTTES	GUUPI	ZIMLO	AMTRA
3600	1800	tr 071°	tr 042°
GP 3.00° TCH 53			
6 NM		5.1 NM	
CATEGORY	A	B	C
RNP 0.30	DA	471/40	355 (400-¾)
AUTHORIZATION REQUIRED			



SW-3, 25 DEC 2025 to 22 JAN 2026

SW-3, 25 DEC 2025 to 22 JAN 2026

TDZ/CL Rwy 6R, 7L, 24R, and 25L
HIRL all Rwy's