

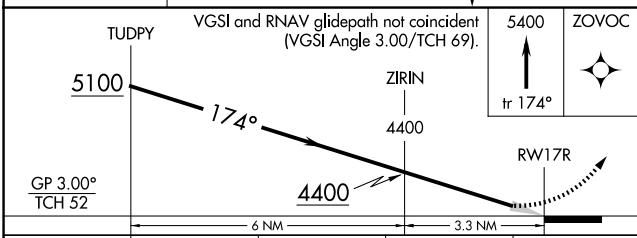
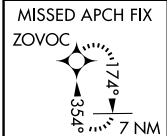
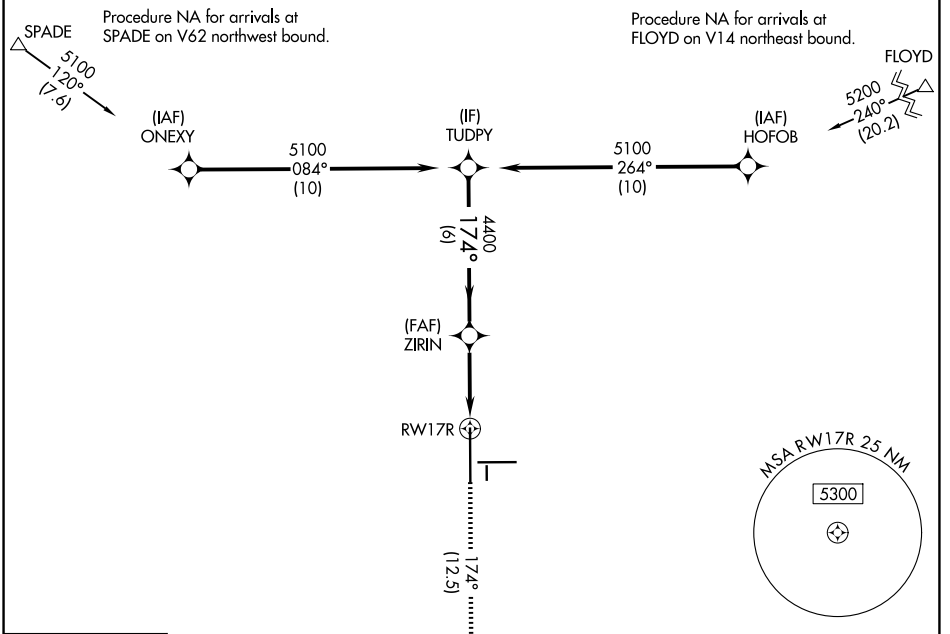
RNAV (RNP) Z RWY 17R

LUBBOCK PRESTON SMITH INTL (LBB)

APP CRS 174°	Rwy Ldg 11500 TDZE 3282 Apt Elev 3282
------------------------	------------------------------------------------------------------

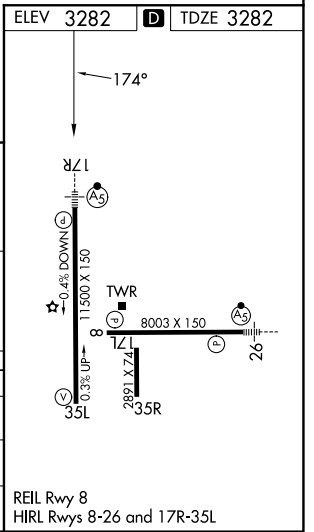
RNP AR APCH - GPS, min RNP 0.50. Authorization required.		MALSR	MISSED APPROACH: Climb to 5400 on 174° track to ZOVOC and hold.
<p>▼ For uncompensated Baro-VNAV systems, procedure NA below -11°C or above 54°C. For inop ALS, increase RNP 0.16 all Cats visibility to RVR 4500 and increase RNP 0.30 all Cats visibility to RVR 5500.</p>			

ATIS 125.3 270.275	LUBBOCK APP CON 119.2 351.8	LUBBOCK TOWER 120.5 239.3	GND CON 121.9 348.6
------------------------------	---------------------------------------	-------------------------------------	-------------------------------



CATEGORY	A	B	C	D
RNP 0.16 DA		3570/24	288 (300-½)	
RNP 0.30 DA		3641/30	359 (400-¾)	

AUTHORIZATION REQUIRED



SC-2, 25 DEC 2025 to 22 JAN 2026

SC-2, 25 DEC 2025 to 22 JAN 2026