

MIAMI DEP CON 126.85 290.325 D-ATIS	RNAV-1 DME/DME/IRU or GPS.		TOP ALTITUDE: 5000
	RADAR required.		

MIAMI DEP CON
126.85 290.325
D-ATIS
133.675
CLNC DEL
135.35
CPDLC
GND CON
121.8 348.6 (8L)
127.5 348.6 (9,
MIAMI TOWER
118.3 256.9

RNAV-1 DME/DME/IRU or GPS.
RADAR required.

TOP ALTITUDE:
5000

TAKEOFF MINIMUMS

Rwy 8L: Standard with minimum climb of 500' / NM to 520, then minimum climb of 215' / NM to 1400.

Rwy 8R: Standard with minimum climb of 500' / NM to 520, then minimum climb of 235' / NM to 1400.

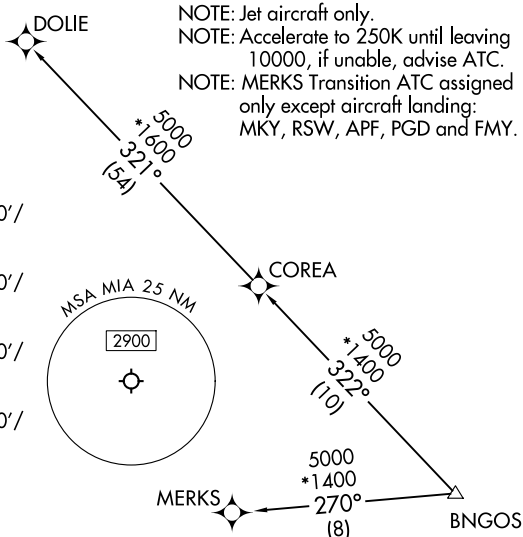
Rwy 9: Standard with minimum climb of 500' / NM to 520, then minimum climb of 240' / NM to 1400.

Rwy 12: Standard with minimum climb of 500' / NM to 520, then minimum climb of 230' / NM to 1400.

Rwys 26L/R, 27, 30: Standard with minimum climb of 500' / NM to 520.

NOTE: Chart not to scale.

NOTE: Jet aircraft only.
NOTE: Accelerate to 250K until leaving
10000, if unable, advise ATC.
NOTE: MERKS Transition ATC assigned
only except aircraft landing:
MKY, RSW, APF, PGD and FMY.



DEPARTURE ROUTE DESCRIPTION

SEE ADDITIONAL REQUIREMENTS ON AAUP

TAKEOFF RUNWAYS 8L/R: Climb on heading 092° to 520, then direct CSALT, then on track 007° to DEALZ, then on track 348° to LIIVV, then on track 297° to NIBLT, then on track 312° to cross MRENO at or above 5000. thence. . .

TAKEOFF RUNWAY 9: Climb on heading 092° to intercept course 082° to CSALT, then on track 007° to DEALZ, then on track 348° to LIUVV, then on track 297° to NIBLT, then on track 312° to cross MRENO at or above 5000, thence. . .

TAKEOFF RUNWAY 12: Climb on heading 124° to intercept course 078° to CSALT, then on track 007° to DEALZ, then on track 348° to LIIVV, then on track 297° to NIBLT, then on track 312° to cross MRENO at or above 5000. thence...

TAKEOFF RUNWAYS 26L/R: Climb on heading 272° to intercept course 282° to KROCS, then on track 315° to RUSSS, then on track 325° to cross MRENO at or above 5000, thence, . . .

TAKEOFF RUNWAY 27: Climb on heading 272° to intercept course 298° to KROCS, then on track 315° to RUSSS, then on track 325° to cross MRENO at or above 5000, thence. .

TAKEOFF RUNWAY 30: Climb on heading 304° to 520, then direct WADLE, then on track 323° to cross MRENO at or above 5000, thence. . .

...on track 322° to BNGOS, then on transition, maintain 5000, expect clearance to filed altitude within 10 minutes after departure.

COREA TRANSITION (BNGOS4.COREA)

DOLIE TRANSITION (BNGOS4.DOLIE)

MERKS TRANSITION (BNGOS4.MERKS)