

APP CRS	Rwy Ldg	<b>7702</b>
<b>021°</b>	TDZE	<b>599</b>
	Apt Elev	<b>599</b>

# RNAV (RNP) Z RWY 2L

NASHVILLE INTL (BNA)

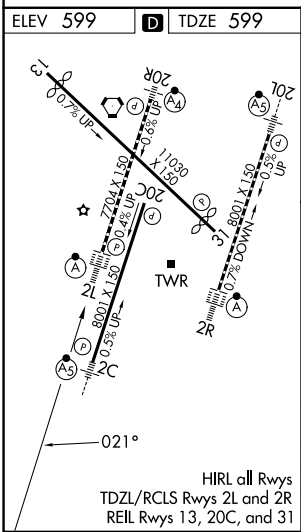
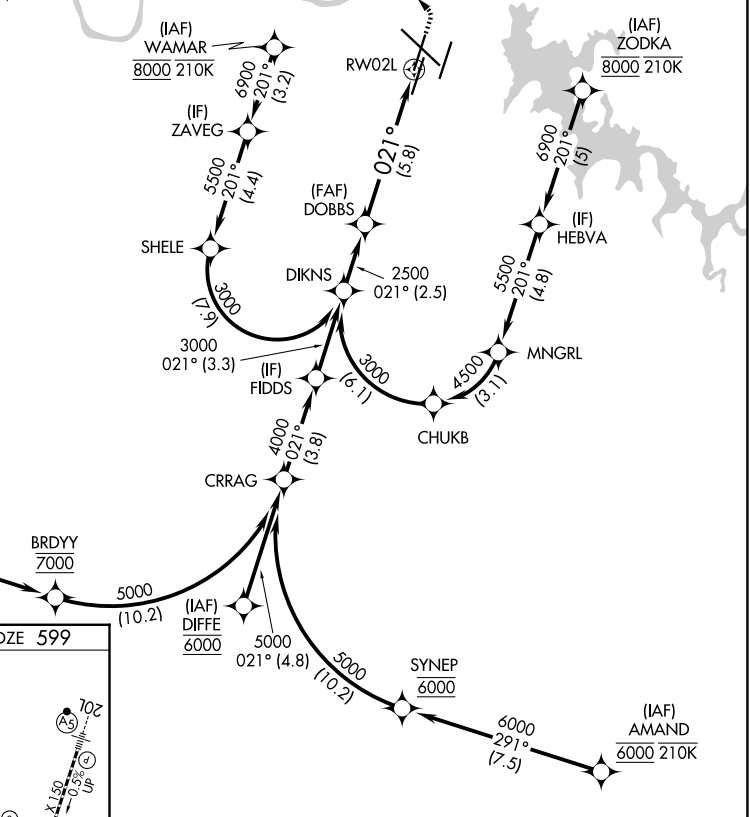
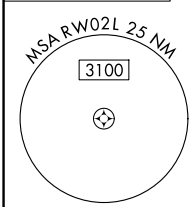
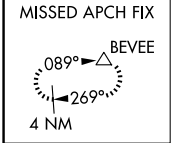
RNP AR APCH - GPS. Authorization required. From BRDYY, SYNEP, MNGRL, CHUKB, or SHELE: RF.

▼ For uncompensated Baro-VNAV systems, procedure NA below -10°C or above 54°C.  
 ▲ Simultaneous approach authorized with Rwy 2R. For inop ALSF-2, increase RNP 0.15 all Cats visibility to RVR 4500.

ALSF-2

MISSED APPROACH: Climb to 1200 then climbing left turn to 4000 direct BEVEE and hold.

D-ATIS <b>135.1</b>	NASHVILLE APP CON <b>118.4 360.7</b> (030°-196°) <b>119.35 372.0</b> (197°-029°)	NASHVILLE TOWER <b>118.6 257.8</b>	GND CON <b>121.9 348.6</b>
------------------------	--	---------------------------------------	-------------------------------



See planview for multiple IF locations.

DIKINS 3000	DOBBBS 2500	1200	4000	BEVEE
GP 3.00° TCH 55		↑	↪	△
2.5 NM		5.8 NM		
CATEGORY	A	B	C	D
RNP 0.15 DA	898/24 299 (300-½)			
RNP 0.30 DA	991/35 392 (400-¾)			

**AUTHORIZATION REQUIRED**

SE-1, 25 DEC 2025 to 22 JAN 2026

SE-1, 25 DEC 2025 to 22 JAN 2026