

# HI-ILS or LOC Y RWY 30

LOC I-BRN <b>111.7</b>	APCH CRS <b>302°</b>	Rwy Idg <b>13,510</b> TDZE <b>2996</b> Arpt Elev <b>2996</b>
---------------------------	-------------------------	--

[USAF]

MOUNTAIN HOME AFB (KMUO)

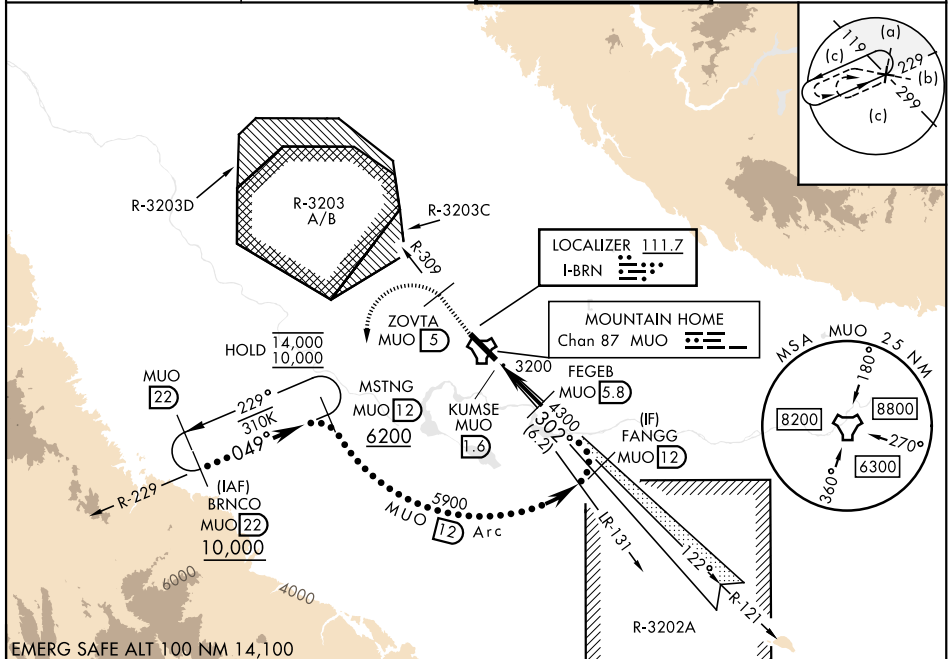
RADAR or DME required

▼ \* When ALS inop, increase CAT CDE RVR to 40 and vis to ¾ mile.  
 \*\* When ALS inop, increase CAT CDE vis to 1½ miles.  
 \*\*\* Circling not authorized NE of Rwy 12-30.



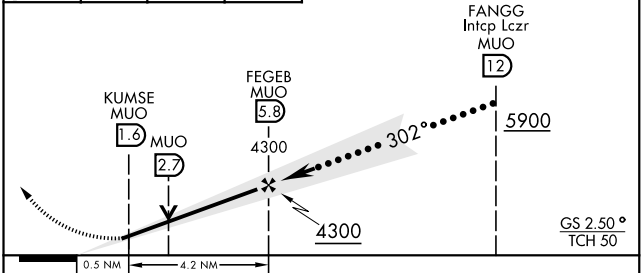
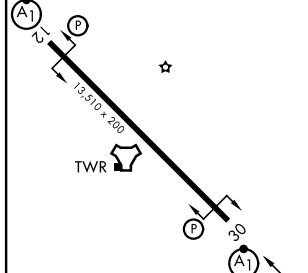
MISSED APPROACH: Climb to 10,000 on MUO TACAN R-309 to ZOVTA/5 DME, and then turn left on heading 169° to intercept MUO R-229 to MSTNG/12 DME and hold, continue climb in hold to 10,000.

ATIS <b>273.5</b>	APP CON <b>124.8 259.1</b>	TOWER <b>133.85 253.5</b>	GND CON <b>120.5 275.8</b>
----------------------	-------------------------------	------------------------------	-------------------------------



EMERG SAFE ALT 100 NM 14,100

ELEV 2996	TDZE 2996	10,000 MUO R-309	ZOVTA MUO 5	MSTNG MUO 12	VGSI and ILS glidepath not coincident (VGSI Angle 2.50/TCH 40).
-----------	-----------	------------------	-------------	--------------	---



CATEGORY		C	D	E
S-ILS 30 *		3196/24	200 (200-½)	
S-LOC 30 **		3480/50	484 (500-1)	
CIRCLING ***		3520-1½ 524 (600-1½)	3560-2 564 (600-2)	3700-2½ 704 (800-2½)

HIRL Rwy 12-30					
FAF to MAP 4.2 NM					
Knots	120	140	160	180	200
Min:Sec	2:06	1:48	1:35	1:24	1:16

# HI-ILS or LOC Y RWY 30

NW-1, 25 DEC 2025 to 22 JAN 2026

NW-1, 25 DEC 2025 to 22 JAN 2026