

(YODUH2.YODUH) 25219

AL-341 (FAA)

RANDOLPH AFB (KRND)

UNIVERSAL CITY, TEXAS

YODUH TWO DEPARTURE (RNAV)

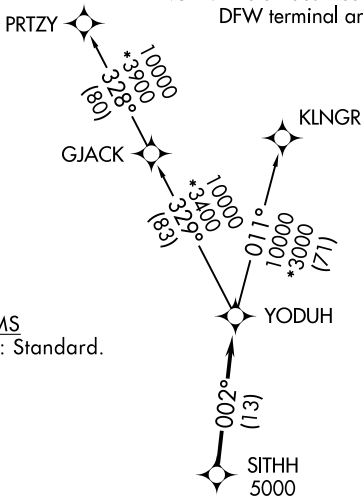
SAN ANTONIO DEP CON
 127.1 290.225
 ATIS ★
 290.525
 ATIS (HANGOVER) ★
 327.8
 CLNC DEL (15L-33R)
 338.35
 GND CON
 119.65 275.8
 GND CON (HANGOVER)
 124.75 353.75
 TOWER ★
 128.25 294.7
 HANGOVER TOWER ★
 120.5 291.1

RNAV 1 - DME/DME IRU or GPS.

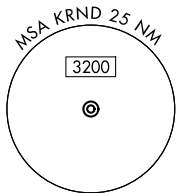
RADAR required for non-GPS equipped aircraft.
RADAR required.

**TOP ALTITUDE:
ASSIGNED BY ATC**

NOTE: Aircraft destined for airports north/northeast of DFW terminal area must file the KLNGR Transition.



TAKEOFF MINIMUMS
Rwys 15L/R, 33L/R: Standard.



NOTE: Chart not to scale.

DEPARTURE ROUTE DESCRIPTION

TAKEOFF RUNWAYS 15L/R: Climb on heading 145° or as assigned by ATC, for vectors to SITHH, thence. . .

TAKEOFF RUNWAYS 33L/R: Climb on heading 325° or as assigned by ATC, for vectors to SITHH, thence. . .

. . . on track 002° to YODUH, then on transition. Maintain ATC assigned altitude. Expect filed altitude 10 minutes after departure.

KLNGR TRANSITION (YODUH2.KLNGR)
PRTZY TRANSITION (YODUH2.PRTZY)

YODUH TWO DEPARTURE (RNAV)
(YODUH2.YODUH) 07AUG25

UNIVERSAL CITY, TEXAS
RANDOLPH AFB (KRND)

SC-3, 25 DEC 2025 to 22 JAN 2026

SC-3, 25 DEC 2025 to 22 JAN 2026