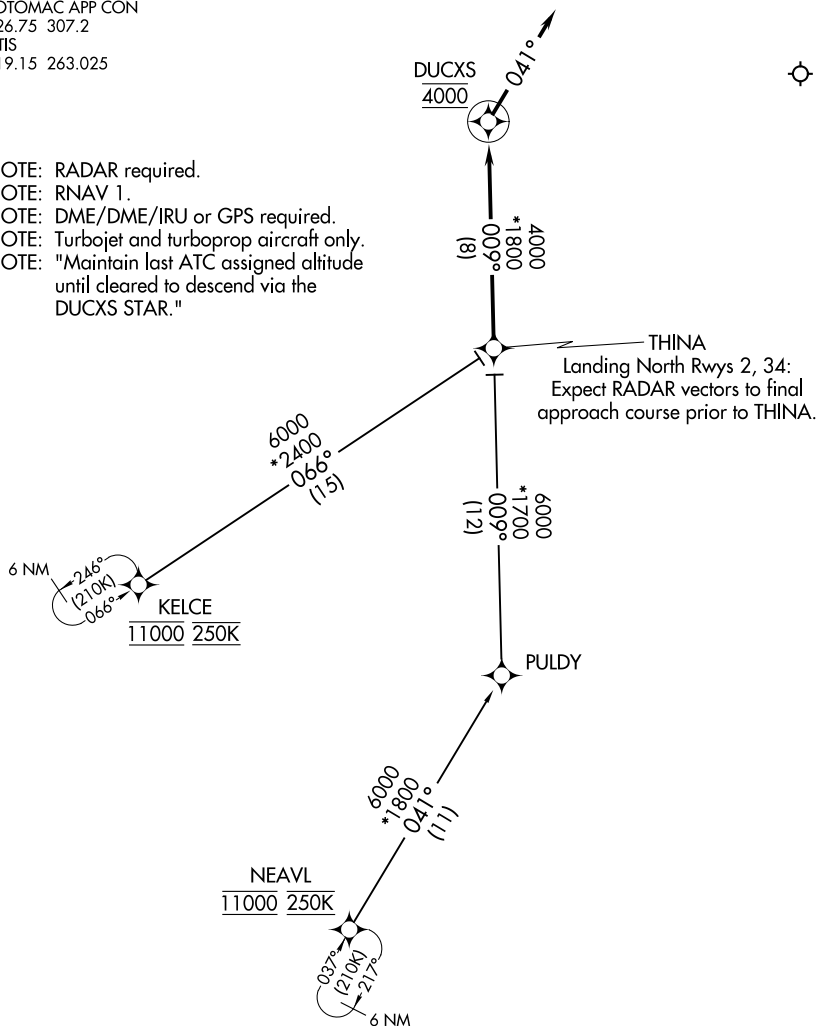


## DUCXS FIVE ARRIVAL (RNAV)

POTOMAC APP CON  
126.75 307.2  
ATIS  
119.15 263.025

NOTE: RADAR required.  
NOTE: RNAV 1.  
NOTE: DME/DME/IRU or GPS required.  
NOTE: Turbojet and turboprop aircraft only.  
NOTE: "Maintain last ATC assigned altitude  
until cleared to descend via the  
DUCXS STAR "



NOTE: Chart not to scale.

## ARRIVAL ROUTE DESCRIPTION

KELCE TRANSITION (KELCE.DUCXS5):  
NEAVL TRANSITION (NEAVL.DUCXS5):

From THINA on track 009° to cross DUCXS at 4000, then on heading 041° or as assigned by ATC. Expect RADAR vectors to final approach course.

NE-3, 25 DEC 2025 to 22 JAN 2026