

TUCSON, ARIZONA

# HI-ILS or LOC Z RWY 31

LOC I-DMA <b>109.3</b>	APCH CRS <b>308°</b>	Rwy Ldg <b>13,645</b> TDZE <b>2704</b> Arprt Elev <b>2704</b>
---------------------------	-------------------------	---

[USAF]

DAVIS-MONTHAN AFB (KDMA)

DME or RADAR required

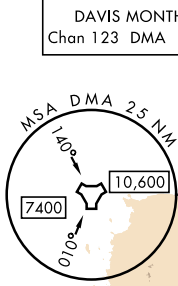
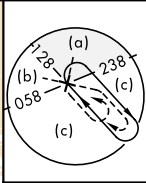
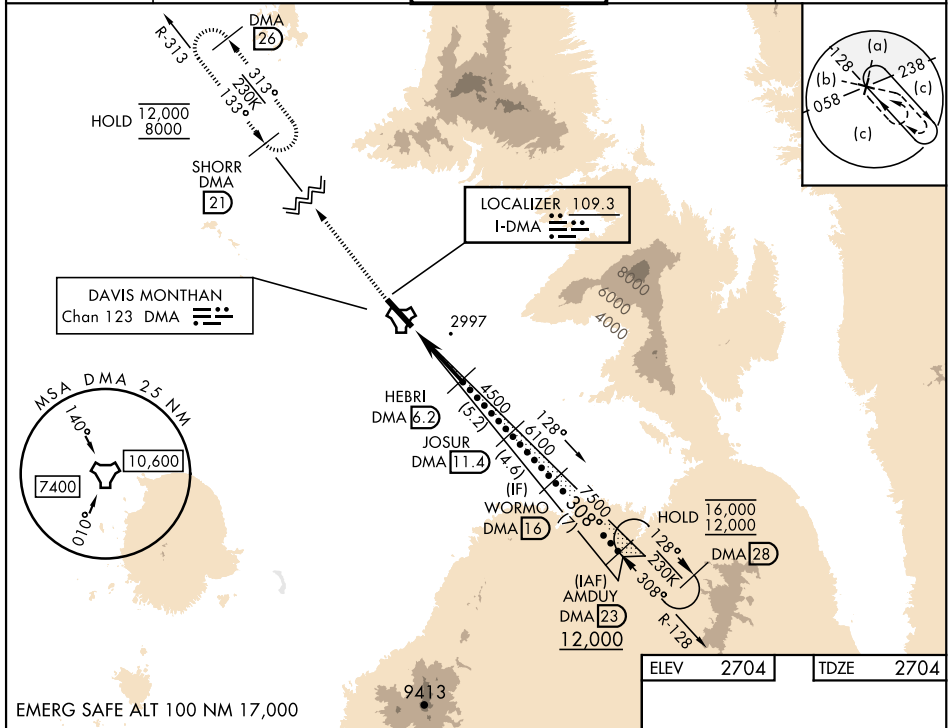
ALSF-1

MISSED APPROACH: Climb to 8000, intercept DMA TACAN R-313 to SHORR and hold, continue climb-in-hold to 8000.

- \* When ALS inop, increase RVR to 40, vis to 3/4 mile.
- \*\* When ALS inop, increase vis to 2 miles.
- \*\*\* Circling not authorized SW of Rwy 13-31.

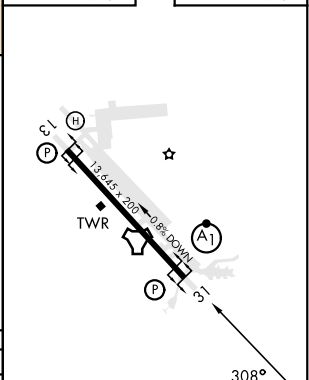
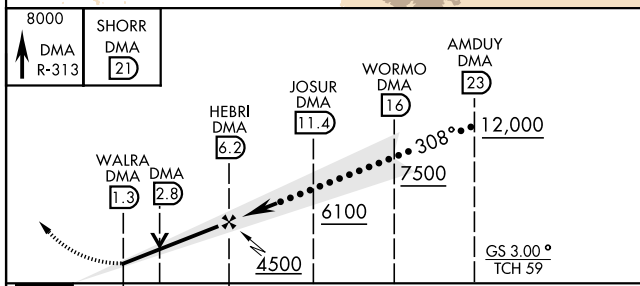


ATIS★ <b>132.3 270.1</b>	TUCSON APP CON 066°-274° <b>119.4 318.1</b> 275°-065° <b>125.1 269.55</b>	TOWER <b>118.85 253.5</b>	GND CON <b>121.8 275.8</b>	CLNC DEL <b>121.8 275.8</b>
-----------------------------	---	------------------------------	-------------------------------	--------------------------------



ELEV	2704	TDZE	2704
------	------	------	------

EMERG SAFE ALT 100 NM 17,000



CATEGORY	C	D	E
S-ILS 31*	2904/24	200	(200-1/2)
S-LOC 31**	3400-1 1/2	696	(700-1 1/2)
CIRCLING***	3400-2 696 (700-2)	3420-2 1/4 716 (800-2 1/4)	3460-2 3/4 756 (800-2 3/4)

REIL Rwy 13					
HIREL Rwy 13-31					
FAF to MAP 4.9 NM					
Knots	120	140	160	180	200
Min:Sec	2:27	2:06	1:50	1:38	1:28

TUCSON, ARIZONA

32°10'N-110°53'W

DAVIS-MONTHAN AFB (KDMA)

Orig 31OCT24

# HI-ILS or LOC Z RWY 31

SW-4, 25 DEC 2025 to 22 JAN 2026

SW-4, 25 DEC 2025 to 22 JAN 2026