

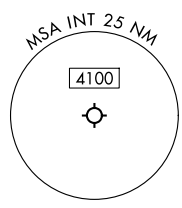
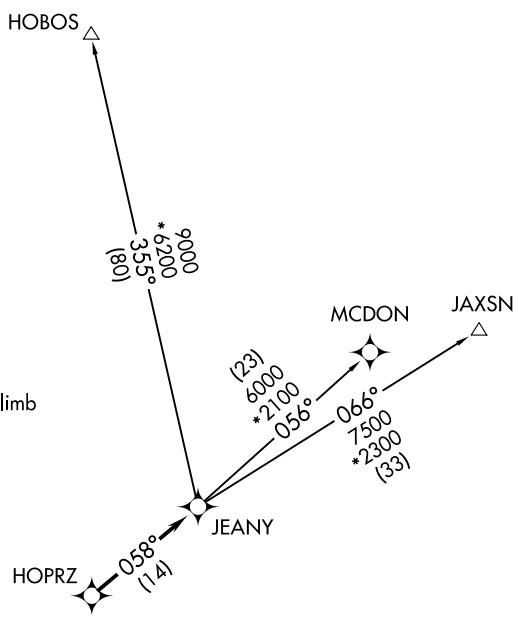
GREENSBORO DEP CON
124.35 269.225
ATIS
121.3
GND CON
128.25
WINSTON-SALEM TOWER ★
123.75 257.8

RNAV 1 - DME/DME/IRU or GPS.

RADAR required. For non-GPS equipped aircraft, LIB DME must be operational for HOBOS Transition.

TOP ALTITUDE:
ASSIGNED BY ATC

TAKEOFF MINIMUMS
Rwy 4, 15, 33: Standard.
Rwy 22: Standard with minimum climb of 340' /NM to 1400.



NOTE: Chart not to scale.

▼

DEPARTURE ROUTE DESCRIPTION

TAKEOFF ALL RUNWAYS: Climb on assigned headings for vectors to HOPRZ, then on track 058° to JEANY, then on assigned transition. Maintain ATC assigned altitude, expect filed altitude 10 minutes after departure.

HOBOS TRANSITION (JEANY1.HOBOS)

JAXSN TRANSITION (JEANY1.JAXSN)

MCDON TRANSITION (JEANY1.MCDON)